



CHESSUM

WINTER WHEAT

The Smarter Play
FOR MILLING WHEAT



More Performance.

Lower Inputs, Premium Quality.
A Smarter Choice for Modern Farming.



STRONG IN-FIELD PERFORMANCE WITH REDUCED INPUTS

- ✓ Consistent high yields under pressure
- ✓ Strong Septoria resistance (7.1)
- ✓ Outstanding Yellow Rust resistance (7)
- ✓ Lower fungicide reliance
- ✓ High NUE



PREMIUM MILLING QUALITY WITH LOWER PROTEIN REQUIREMENTS

- ✓ Premium functionality at 11-12% protein
- ✓ Excellent baking performance
- ✓ Strong dough strength
- ✓ Best loaf volume in testing
- ✓ Above average water absorption



ACCESSIBLE, COST-EFFECTIVE SEED SUPPLY

- ✓ Efficient cost effective supply model
- ✓ Full traceability
- ✓ Competitive pricing
- ✓ Fair royalty structure
- ✓ Reduced production costs



CHESSUM. MORE VALUE EVERY STEP OF THE WAY



YIELD SECURITY

High yields untreated & treated

HARVEST YEAR	HARVEST YEAR YIELD (% CONTROL)					
	2023 (Agrii Private Trials)		2024 (NI1 Official Trials)		2025 (Agrii Late Drilled Trials 21st Feb)	
	Treated	Untreated	Treated	Untreated	Treated	Untreated
CHESSUM	108.8	122	105	122	113	109
Extase (control)	100.0	100.9	100	100	-	100



OUTSTANDING UNTREATED PERFORMANCE

Delivering yield where it matters most.

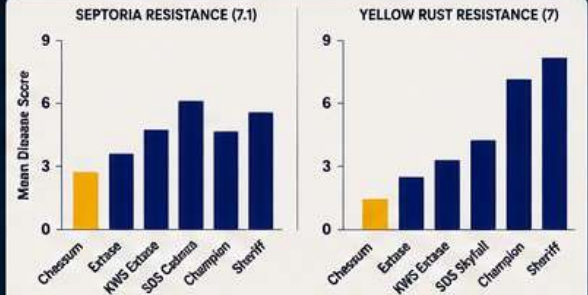


DISEASE RESISTANCE

Strong disease resistance

Disease Resistance Comparison: Chessum vs Others
Data from Untreated Trials. Lower score = Better Resistance.

Variety Type: ■ Chessum ■ Others



SEPTORIA RESISTANCE 7.1 • YELLOW RUST RESISTANCE 7

Strong protection with reduced fungicide reliance.

FARMER TESTIMONIAL



“

Chessum follows the ethos of how I like to grow my crops. I don't like to feed my crops with a lot of nitrogen and, like Nelson winter wheat, you can put in lower amounts of N and still get a usable crop in terms of protein.”

Colin Chappel,
Lincolnshire

MILLER TESTIMONIAL



“The LD2BN (Chessum) had a good final bake shape, golden crust colour, with a final bake height measuring 14.7 cm, so an oven spring of 2.2 cm. The crumb colour was classed a bright white and slightly more so than the control. The texture was classed good and close, just marginally closer than the control but with good spring back qualities when pressed.”

The dough felt good and strong with a bright white dough colour. The water absorption was also very good at 53.0%, which was 2.0% less than the Skyfall control but approx. 2.0% protein on this wheat.

Marriages Mills



AGRONOMICS

- Early maturity – similar to Extase (-1)
- Medium-tall type with good standing (similar to Extase)
- High specific weight (80kg/hl)
- Premium functionality at 11-12% protein
- Strong agronomic package for sustainable production



MILLING & BAKING PERFORMANCE

WATER ABSORPTION	R/E RATIO	LOAF VOLUME	DOUGH STRENGTH
ABOVE AVERAGE	ABOVE AVERAGE	BEST IN TESTING	STRONG



CHESSUM. HIGH YIELDS. STRONG RESILIENCE. PREMIUM MILLING POTENTIAL.