

— AUTUMN 2023 / SPRING 2024

Annual Organic Brochure



Contents

Winter Wheat	04
Winter Barley & Oats	12
Spelt	13
Winter Rye & Triticale	14
Linseed & Winter Beans	15
Organic Grass Seed Mixtures	16
Arable Silage Mixtures	20
Spring Wheat	21
Spring Barley	23
Spring Barley & Naked Oats	24
Spring Oats	25
Spring Triticale	26
Spring Triticale & Lupin	27
Spring Rye	28
Spring Beans & Peas	29
Seed Treatments	30
Organic Market Update	32
Cope Seed Team	34

Dear Grower

Welcome to our 21st Edition of our Annual Organic Brochure. We are extremely proud of our brochure as it allows us to connect with you and hopefully assist you in your decision making. We are always open to feedback and if there is an area where you would like more information, please let me know and we will try and include it in next years.

So far the season has been kind. At the time of writing, we have had excellent drilling conditions in the autumn and spring, plenty of rainfall and now beautiful sunshine. We could of course do with a little more rainfall to keep the crops healthy and prevent them from burning out, but if things continue as they are we could be in for a bumper harvest.

There has of course been a cost of living crisis and a reluctance from supermarkets in stocking premium products as shoppers look to reduce costs where they can. Therefore our efforts in finding homes overseas has never been more important. We continue as ever to work for the benefits of UK organic farmers, never importing when UK stocks are available and actively looking for export opportunities. We do have some exciting outlets opening up overseas which we can discuss with you throughout the season.

In other news....

New Staff

This year the Grain department has welcomed two new members of staff. We have the wonderful Kat Diggins our new Grain Administrator, supporting Tom Desborough with contracts, fixings, logistics and paperwork. Kat has already made such a positive start and she is very much looking forward to her first harvest with us. We are also welcoming Harry Dean-Allen to the grain team as farm buyer. Harry has come from a local estate where he was foreman and is very much looking forward to getting to know some of you.

New Varieties

This year we have continued to push our trialling activity to ensure we are bringing you the best varieties for your farms, reinvesting nearly 30% of our profits back into private and Official AHDB trials. We now have a strong pipeline of material coming through trials including Everlong Spring Wheat, Aretha Winter Barley and Gent Spring Pea. This year we have a number of new varieties from UK plant breeders to add to our portfolio. First is Aldaniti winter wheat, a hard group 4 variety from Limagrain with outstanding disease resistance. Another new winter wheat for our portfolio is Champion, a hard winter wheat from DSV, with exceptional untreated yield potential. We also have a new spring wheat called KWS Ladum which is a group 1 milling quality variety. After so many years, it is exciting to have something else to sit beside Mulika, that retains the quality of Mulika, whilst offering yield improvements.

Everlong Spring Wheat

We hope this November that our variety Everlong will get accepted onto the AHDB Recommended List. Everlong is a spring wheat with milling potential from the breeder Edelhoff, in Austria. Everlong is the highest yielding variety of all the candidates and higher yielding than anything else on the Recommended List. Everlong also has the highest specific weight of any listed or candidate variety. Due to superseding all targets set by the AHDB, Everlong moved from NL2 trials straight through to RL without a presentation having to be given. We have everything crossed that it has another good harvest and we look forward to bringing the

variety to market in spring 2025. If you are interested in growing Everlong on a seed contract we are looking for growers this coming spring.

New Seed Growers

As our business continues to grow, we are looking for growers who are interested in becoming seed growers. In return for an eye for detail and good storage we pay competitive premiums to our seed growers. If you are interested please contact Tom Siswick who will be pleased to help (tom.siswick@copeseeds.co.uk)

Charitable Work

This year the cost of living crisis has and still is impacting many families who are having to make the choice between eating and heating. It is our philosophy that everyone should be able to eat healthy, nutritious, well grown food, therefore we initiated a grain to flour project with our local watermill and foodbank. We gifted organic milling wheat to the local watermill where volunteers milled the grain using the old stones, into organic milling flour which was then packed and delivered to the local food bank. We are really proud of this initiative and continue to work closely with Cogglesford Mill and the local foodbank.

We have also supported my villages local U9s football team who have won 3 trophies this season, the local boxing club who work with disadvantaged boys and girls from the local area and donated again to farming charity Forage Aid.

As always we wish you a productive harvest and look forward to working with you over the coming months.



Gemma Clarke
MANAGING DIRECTOR

Nelson Winter Wheat



— INFORMATION

- German E Quality Variety
- High quality and high protein grain
- Premium earning potential
- Strong disease resistance
- Excellent weed suppressant



— ABOUT

Nelson is a German E Quality milling variety which has proved itself as a consistent variety and should continue to be considered both under organic and conventional regimes. We are now celebrating 10 years of Nelson and each year we sell more seed than the year before. A major mill has also increased its requirements of Nelson from Harvest 2023.

Nelson has a high untreated yield potential and should be considered both for milling and feed. This variety produces an excellent quality grain sample with one of the highest specific weights and haggerbergs. Nelson is a tall variety with a stiff straw and is early to mature. Nelson continues to offer an excellent disease package making it a consistent and reliable performer.

"We've been supplying German E Wheats to the UK market for eleven years and Nelson still stands out. We have seen excellent quality results as well as strong disease resistance. Plus, it has shown to help to suppress blackgrass because of its height. Nelson has proven itself over the years to be a consistent and reliable variety capable of achieving organic milling premiums. This coming year demands from the millers for Nelson has increased again and we are looking for more growers."

Trevor Cope, Chairman

	MATURITY	UNTREATED CROP HEIGHT	TREATED CROP HEIGHT	UNTREATED YIELD %	TREATED YIELD %	UNT SPECIFIC WEIGHT (KG/HL)	TREATED SPECIFIC WEIGHT (KG/HL)	TREATED PROTEIN (%)	TREATED HAGBERG (S)
Skyfall	5	73	73.3	89.2	104.1	69	76.7	12.8	247
Crusoe	1	75	76.7	105.7	102	75.6	78.6	13.3	294
Nelson	1	82	88.3	112.8	98.3	76.4	78.3	13	355

*AGRIL Harvest 2019 (Essex)

	MATURITY	UNTREATED CROP HEIGHT	TREATED CROP HEIGHT	UNTREATED YIELD %	TREATED YIELD (T/HA)	UNT SPECIFIC WEIGHT (KG/HL)	TREATED SPECIFIC WEIGHT (KG/HL)	TREATED PROTEIN (%)	TREATED HAGBERG (S)	N OFFTAKE
Skyfall	6	80	74	115	8.67	70	80.7	13.8	365	217
Crusoe	6	80	73	70.3	9.18	65	81	13.7	348	212
Nelson	8	93	88	117.8	8.42	76.5	83.5	14.2	378	201

*AGRIL Harvest 2018

	GREEN LEAF RETENTION (30/6)
Nelson	55%
Skyfall	33.80%
Crusoe	36.30%

— BUYBACK

Buyback contracts are available. Please get in touch with Tom Desborough at Cope Seeds for more information, by emailing tom.desborough@copeseeds.co.uk.



Now that's a **special combination!**

KWS DAWSUM

- Exceptional specific weight (79.4 kg/hl)
- Very high yield potential across all regions of the UK
- Super flexible on farm with a wide sowing window



www.kws-uk.com

SEEDING
THE FUTURE
SINCE 1856



The **complete package** with
Septoria protection built in!

KWS EXTASE

- *Still* the highest untreated yield on the RL
- The most complete package in terms of disease resistance and quality on the market today
- Exceptional resistance to *Septoria tritici* - the first variety over an 8 on the market



www.kws-uk.com

SEEDING
THE FUTURE
SINCE 1856





A stylized illustration of a hand splashing liquid, with the word 'Aahhh...' written across it. The background is blue with yellow and orange wheat stalks and a glass of beer. The hand is white with black outlines and is splashing liquid. The word 'Aahhh...' is written in a cursive font across the hand.

Are you looking for a variety with...

Incredibly high yields

Market opportunities for brewing and distilling

MBC Approval

**Laureate – the number 1
spring barley**



Laureate

Spring barley

syngenta®

Syngenta UK Ltd. Registered in England No. 849037.
CPC4 Capital Park, Fulbourn, Cambridge CB21 5XE.
Tel: +44 (0) 1223 883400 Technical Enquiries: +44 (0) 800 1696058
Email: customer.services@syngenta.com Website: www.syngenta.co.uk

AHDB

RECOMMENDED

KWS Extase Winter Wheat

— INFORMATION

- Highest Untreated Yield on AHDB list
- Very high score for resistance to Septoria triticii
- Milling premium potential



— ABOUT

KWS Extase is a group 2 variety with the highest untreated yield of any winter wheat on the AHDB 2023-2022 recommended list. KWS Extase not only offers a confident baking performance but has an unrivalled performance as a feed wheat. It has excellent standing power, early harvesting and a robust disease package allowing for flexibility of management on farm. KWS Extase is an outstanding choice for the breadmaking market with a specific weight of 79.4 kg/hl, a HFN of 294, the highest score in both categories of any of the established breadmaking wheats, but it should be considered as the perfect feed wheat in organic farming.

"Extase's speed of movement through stem extension is quicker than the average and closer to that of varieties such as Gallant, so growers will want to prioritise it ahead of others when planning spring fertiliser schedules. Care must be taken in planning sowing to make the biggest advantage of earliness. Sowing later maturity crops before earlier ones can nullify an advantage. Early maturity is a key characteristic for any milling type, it ensures that grain quality is preserved, especially in a catchy harvest according to the Breeders, KWS."

Will Compson, KWS

Graham Winter Wheat

— INFORMATION

- Consistent performer
- High untreated Yields
- Excellent disease resistance
- Good standing power

— ABOUT

Graham has performed consistently over the last few years with high yields, especially in the west. Graham has high untreated yields and it has a good all round disease package with a strong score for Septoria Tritici. A relatively tall variety, Graham has good standing power so ideal for mixed farms where straw is also important. Graham seems to perform especially well on heavier soils and in the West.

KWS Siskin

— INFORMATION

- Good Septoria tritici at 6.5
- Superb physical grain quality
- Vigorous growth habit with wide sowing window

— ABOUT

KWS Siskin is a group 2 variety with good untreated yields and excellent yellow rust resistance. It's so versatile, it can grow anywhere on the farm. Combining high yields, exceptional Hagberg, strong protein (12.7% from milling trials) and its positive ukp status, KWS Siskin opens multiple end-markets for farmers, unlocking premiums for their shed load of grain.

In addition it's consistent across soil types and performs well as both a first and second wheat. KWS Siskin has one of the best Septoria tritici scores of 6.8 on the list and scores high for mildew and yellow rust.

LG Astronomer Winter Wheat

— INFORMATION

- One of the most complete agronomic packages available on the AHDB RL 2022/23
- Soft wheat, with the highest untreated yield (86%), combined with the best Group 3 specific weight available (77.8 kg/hl)
- Excellent disease profile, with OWBM resistance



— ABOUT

One of the most complete agronomic packages available on the AHDB RL 2023/24 with the highest Group 3 untreated yield (88%) combined with the a specific weight available (78.2kg/hl) and an excellent disease profile with OWBM.

Achieving high yields and gaining a premium is always an attractive proposition for growers as they look to maximise their most profitable crop - and with the added bonus of on-farm security, LG Astronomer is a really strong package, says Ron Granger, Arable Technical Manager for Limagrain UK.

"However, despite having the qualities sought by biscuit makers and distillers, LG Astronomer will also strongly appeal to feed growers as a result of its good agronomics." LG Astronomer is moderately tall with stiff strawed with OWBM resistance, and a similar maturity of '+1', to KWS Firefly.

The variety has excellent disease resistance, offering 9's for yellow and brown rust, and a 6.2 for Septoria" he says. "The variety is equally as good as a second wheat or a first wheat, and in Limagrain trials, performs very well in both medium and heavy soil types - which is backed up by the AHDB RL data sets."

Grain quality is very important for a biscuit wheat, and LG Astronomer stands out with its excellent quality attributes - with one of the best specific weights on the RL of 78.2 kg/hl, and a good secure HFN of 245.

Revelation Winter Wheat

— INFORMATION

- Still one of the most consistent performers under organic systems
- Good disease resistance
- Excellent choice as a 2nd wheat
- Prostrate growth habit



— ABOUT

Revelation still offers one of the best disease resistance profiles of any of the current Winter Wheat varieties. Performs consistently over erratic growing seasons. Worth noting revelations resistance to Yellow Rust has remained robust even when exposed to the 'newer races. Revelation carries the Pch1 Eyespot resistance gene, which attributes to its success in early drilled or second wheat situations. High tillering, prostrate variety in the winter with a slow ear development in the spring, it should be noted that Revelation is a late maturing variety.

"The variety has been a consistent performer on our land and has always proved to be a clean variety with characteristics that are well suited to Organic Farming."

Richard Thompson, East Yorkshire Organic Farmer

LG Aldaniti



— ABOUT

LG Aldaniti is an awned hard Group 4 variety with short stiff straw and an earlier maturity. It offers a yield potential similar Skyfall whilst producing a very high untreated yield due to its diverse package.

The variety has characteristics that Cope Seeds consider of importance in both the Organic and Regenerative farming situations where these additional agronomic attributes give the opportunity to reduce input cost.

LG Aldaniti has an exceptional disease profile offering high ratings for resistance to both Yellow and Brown rust and importantly Septoria tritici. This is combined with a high Eyespot rating based on the Pch1 gene.

The variety offers very good grain quality with a high specific weight and high protein content which limited tests suggest a good performance in the bread making process by some end users.

LG Typhoon



— ABOUT

LG Typhoon is a hard feed wheat offering a good yield potential around a very secure agronomic package considered of value on farm. The variety offers security and on farm adaptability regarding drilling date and rotation, performing well in both the earlier drilling situation and as a second wheat.

The variety has an excellent disease resistance profile offering high scores for resistance to Yellow rust and Septoria tritici in combination with OWMB resistance.

Its high tillering growth pattern combined with slower spring growth, are especially desirable characteristics for growers considering earlier drilling dates on farm.

LG Typhoon appears to have the desirable agronomic attributes for the Organic and the Regenerative Agriculture movement and has performed well in the Direct drilling, wider row scenario.

Champion Winter Wheat

— ABOUT

A hard feed wheat with high untreated yields. Relatively early to mature, Champion has a good disease package with high scores for Yellow rust and Septoria but modest scores for Brown Rust. It is OWMB resistant

It is adaptable to a wide range of soil types and should perform well as a 2nd wheat.

Champion is one of the tallest varieties on the AHDB recommended list but has a relatively weak straw compared to KWS Extase and Graham and the grain produced has an average specific weight.

Mayflower Winter Wheat

— ABOUT

A Group 2 variety with good bread making potential, Mayflower combines high untreated yields with a good specific weight, a high Hagberg Fall Number and a good protein potential.

A tall variety but with an excellent resistance to lodging, Mayflower has an excellent disease resistance package especially to Septoria triticii where it has produced the highest score on the current AHDB recommended list (8.9).

Bi-Cropping



Bean and Wheat Bi Crop in Cambridge

— ABOUT

A new opportunity for farmers has arisen with excellent results now being seen from bi-cropping spring wheat and spring beans a technique that is proving to be mutually beneficial for both the bean and wheat crops, suppressing weeds naturally, raising wheat protein content and fixing nitrogen in the soil.

Crops can be harvested and stored together and are cleaned and separated by the buyer, meaning farmers won't have to worry about separating the beans and grain themselves. With it becoming increasingly difficult to grow organic beans and wheat to high levels of quality on their own, this bi-cropping opportunity may help to mitigate our the new weather patterns brought on by climate change.

Oat/Pea and Oat/Barley combinations are also something to consider as these can not only be grown as wholecrop but can also be harvested as grain and divided out. The addition of the cereal can help the pea crop to stand up and make it easier to harvest whilst the cereal crop benefits from the nitrogen fixing qualities of the peas.

Cope Seeds are offering by back contracts for either Paragon or Mulika Spring Wheat grown with Victus Spring Beans and interested farmers can contact Cope Seeds to learn more by emailing gemma@copeseeds.co.uk or calling +44 (0) 1529 421081. Visit www.copeseeds.co.uk to view the contract proposal.

Winter Wheat Blends

— WHY LOOK AT GROWING BLENDS?

We have launched a pre-mixed range of organic wheat blends to meet growing interest in this approach.

Blends are nothing new. Back in the 1980s, there were 1,000s of tonnes of seed blends being sold and grown in the UK. But with the pressure on seed plants to get tonnage through in the Autumn and a culture towards monoculture, they faded away.

It is believed that growing blends helps to increase yield potential whilst reducing disease pressure. Recent research by Dr Kristoffersen's at the Aarhus University helps to validate these claims.

Looking at over 19 years-worth of official Danish data, a 4-way blend was grown each year in official trials as a reference. The results showed the blend reduced Septoria severity by approximately 10%

with an increase in yields of 1.4%. In untreated trials, these advantages increased to 17% reduction in Septoria severity and 2.4% increase in yield.

We believe blends should be considered by organic growers and we are now offering two organic wheat blends that have been carefully considered and selected to ensure we can offer you buy back contracts for each. See next page for further details.



Summit

Organic milling soft wheat blend

— ABOUT

This season, we are offering a 2-way soft wheat blend with a milling buy back. The blend will be a later maturing crop with high yield potential and tall straw, perfect for weed suppression. The varieties within the blend are proven organically and together offer some protection against Orange Wheat Blossom Midge.

A buy back for Summit with a premium over organic feed wheat is available.

APEX

Organic dual purpose wheat blend

— ABOUT

Apex combines three of the best wheat varieties for untreated yield potential, Septoria tritici resistance & early maturity. Not only is Apex strong agronomically, the grain quality of this blend is superb with high specific weights, high habergs and potentially levels of protein suitable for milling. This blend is suitable both for feed and milling markets.

A buy back for Apex is available for either feed or milling.



INSPIRING CONFIDENCE

“ We chose LG Astronomer for its quality, good agronomics and disease resistance. ”

John, East Yorkshire



LG ASTRONOMER WINTER WHEAT

- Exceptional All Round Agronomic Security
- Excellent Disease Resistance
- Market Opportunities for Biscuit and Distilling



Surge Winter Barley

— INFORMATION

- 2-row feed barley
- High disease resistance
- High untreated yields
- Excellent standing power

— ABOUT

Surge is a tall 2 row variety with good standing power that produces one of the highest untreated yields on the AHDB recommended list. It has a good specific weight with relatively low screenings. It is suited to all soil types but has performed especially well on heavier soils.

Surge has average resistance to Mildew but good resistance to Brown Rust and Rhynchosporium

ENTRY NAME	COMBINED DISEASE RESISTANCE SCORE	SPECIFIC WEIGHT (KG/HL)	UNTREATED YIELD (%)
Valerie	25	71.2	78
Surge	25	70.6	88
KWS Tardus	22	70.6	85
California	23	69.1	80

AHDB Recommended List 2023/2024

Mascani Winter Oats

— INFORMATION

- Milling potential
- Reliable and consistent
- High specific weight and kernel content

— ABOUT

A lower input crop option for next year is winter oats, suggests Senova, who highlights the market leading winter oat variety, Mascani, as a good choice while demand for human consumptions oats remains firm. Having found favour with the millers, who value its processing performance, Mascani is expected to dominate winter oat variety sales again this autumn. “Mascani is rock solid” notes sales manager Tom Yewbrey. It’s agronomic strengths of good disease resistance, early maturity and straw strength means that it is cost-effective to grow, while its proven grain quality characteristics ensure that it has a ready market. Having given good on-farm results ever since it arrived on the scene, Mascani is likely to sell out ahead of the autumn.

Thanks to its superior grain quality and performance in the mill, Mascani now commands as much as 75% of winter oat plantings in England and remains the frontrunner for Autumn 2023 drillings. Bred by IBERS, Mascani has reached this market position by being both the miller’s favourite and a reliable performer on-farm. Agronomically, Mascani has a strong disease resistance package – including the best mildew score - and good straw strength, while its early maturity helps with harvest workload planning.

Look out for new variety Cromwell, he adds, which is coming through the testing system and has given some very promising early results. A Mascani cross, it has both the required grain quality and the agronomic characteristics that indicate success.

"There have been other winter oat varieties added to the Recommended List in the last few years. For various reasons, none of them have suited the end market or been as reliable on farm as Mascani."

Tom Yewbrey, Senova

ENTRY NAME	STRAW LENGTH (CM)	RESISTANCE TO LODGING (1-9)	MATURITY	MILDEW RESISTANCE (1-9)	CROWN RUST RESISTANCE (1-9)	KERNAL CON-TENT	SPECIFIC WEIGHT	SCREENINGS (% THROUGH 2MM)
Mascani	122	6	0	6	5	76.4	53.3	1.7
RGT Lineout	118	6	-1	3	5	73.1	52.2	6.2
RGT Southwark	125	5	-1	4	8	72.9	53.6	5.5

Convoitise Winter Spelt

NEW

— INFORMATION

- High untreated yields
- High specific weight
- Bread making quality
- Variety adapted to organic and low input farming
- Increasingly used in livestock rations

— ABOUT

Spelt is an ancient grain which has been around for 7,000 years and harvested for food for over 2,500 years. Its profile has changed very little over this time. The crop is enjoying a revival in popularity in artisan breads and cereals and is increasingly employed as a component in livestock rations.

Convoitise has a strong disease profile, with good resistance to Septoria tritici, yellow rust and mildew. It has good protein content and a high specific weight, with an average to tall height.



VARIETY	YIELD (T/HA)	POWDERY MILDEW (1-9)	SPECIFIC WEIGHT (KG/HL)	HEIGHT (CM)
Convoitise	3.57	5	48.4	130
Zollernspelz	3	4	44.8	128

*Untreated Agrii trials data, 2019

Zollernspelz Winter Spelt

— INFORMATION

- Modern spelt variety with high yield and traditional flavour
- Stable yields on poor soils

— ABOUT

- Sole spelt with high standing power and good disease resistance

Fits particularly for rough and humid locations. Highly recommended for organic farming. Zollernspelz has been a firm favourite for a number of years. Liked by growers and end users.

Wirtas Spring Spelt

— INFORMATION

- Exceptional milling quality
- High protein content (14%+), hagberg and specific weight
- Higher nutritional benefit vs winter varieties
- Good all-round disease resistance
- Excellent characteristics gives farmers more flexibility

— ABOUT

As one of the only (if not the only) spring spelt varieties on the market, Wirtas has exceptional characteristics and gives farmers more flexibility.

Our experience and research has shown an improvement in the quality of Wirtas compared to winter varieties and as such, Wirtas trades at a premium over winter spelts. It is very much like comparing winter wheat with spring wheat where the yields of spring wheat are lower, but the quality stronger. Wirtas will not yield as well as a winter spelt, but when compared to spring wheat, it is comparable in yield and able to produce good quality which the mills like. The scientist behind Wirtas confirm that

spring spelt, like spring wheat, has better quality than the commonly cultivated winter spelt and contains more gluten, protein and minerals such as iron, zinc and copper. The 2019 harvest results from the Organic Research Centre are promising where the crop was relatively disease free and mirrored similar results from previous Agrii trials. Like winter spelt, Wirtas is best grown on less fertile land to prevent possible lodging.

While becoming more popular, spelt is still a niche market and we would advise growers to sign up to a contract whether through us or your preferred trader. If you would like more information, please call Gemma on 01529 421081.

Elego Winter Rye

— INFORMATION

- **High untreated yield potential**
- **Good disease resistance**
- **Early-medium maturity**
- **Competitive to weeds**
- **Dual purpose – feeding and milling**



— ABOUT

Elego is a dual purpose, population (non-hybrid) variety bred by the Austrian Plant breeder Edeloff, one of the country's most established rye breeders and is becoming increasingly popular with both growers and millers.

Elego is an early to medium maturing variety, equally suited to forage or grain production. It has a high untreated yield potential accompanied by an excellent disease resistance profile. The variety is tolerant of poor harvesting conditions, and its stable Hagberg makes it an ideal variety for milling.

Elego is a tall variety with the ability to outcompete weeds which makes it ideal as a cover crop, either sown on its own or in a mixture with vetches.

Elego makes an ideal forage crop as it can be grazed later in the Autumn and earlier in the spring than most grass leys because of its ability to grow in colder soil temperatures than grass.

"Elego always does a great job for us smothering out weeds. We tend to graze the crop quite hard with sheep and it bounces back well. This rye goes to both a local miller and a local dairy farmer who still sees the benefits of feeding rye. In Autumn 2021, we planted 2 fields of rye, one was drilled and one was broadcast and as at June this year, both fields look good and equally healthy."

Mike Stringer, Yorkshire

— WHY GROW TRITICALE?

A cross between Wheat and Rye, it's large and deep root system makes Triticale an ideal crop for marginal or drought prone land as it is better able to find moisture and nutrient deeper within the soil.

It is a low input species with excellent all round disease resistance, high in protein and with a good specific weight.

Triticale, being a tall species is able to smother soil borne weeds much better than most other cereal crops and the straw, as well as producing good yields is nutritionally superior to most other grains due to its higher lysine content.

Triticale is less likely to be grazed by Rabbits over the winter and is useful as a crop to be grown in field adjacent to woodland areas. It has many uses including forage production, milling or for AD plants meaning there are more marketing opportunities and is an ideal crop for the livestock farmer.

Kasyno Winter Triticale

— INFORMATION

- **High yielding variety**
- **Relatively short strawed**
- **Excellent yellow rust resistance**

— ABOUT

Kasyno is one of the highest yielding varieties on the 2023/2024 descriptive list. It is a short, stiff strawed variety with excellent yellow rust resistance and is early to mature. This combination of superb yields, high specific weight and excellent standing power makes the variety suitable for growing on all soil types.

Organic Linseed – We need you!

— INFORMATION

- **Premium Organic Contract Available**
- **Access to a qualified agronomist**
- **Advise from successful growers**

— TIPS

- **Avoid heavy clay soils**
- **A fine seedbed with a good tilth is important**
- **Drill dates: Early Sept-Early Oct or Mid March- End of April**
- **Early weed control is essential, so only advise considering linseed on your cleaner land**

— ABOUT

Linseed is used in a wide range of products including health foods, Linoleum flooring, oils for treating wood, medicinal uses and even soaps.

Linseed can be a useful addition to your rotation, with evidence supporting higher wheat yields when grown after a crop of Linseed.

We have a customer in the UK looking to reduce his reliance on imports and has tasked us to find organic farmers willing to grow Linseed. We are therefore able to offer an attractive premium over the market value of Organic Linseed. At the time of writing, we have what look to be excellent Linseed crops with 2 growers in the East of England.

To help and encourage a successful crop, we are offering 2 hours free time with an agronomist with exceptional experience in growing Linseed crops in low input situations. We will also provide tips and advise during the growing season from our current growers to ensure your crops are given the best opportunity for success.

If you are interested in growing Linseed this coming season, please contact tom.desborough@copeseeds.co.uk

Vespa Winter Beans

— ABOUT

Vespa is Senova's main winter bean variety in the market for this autumn's drillings.

Offering very high yields of 111 and having the joint best standing ability on the list, with a score of 8, Vespa is proof of the progress that has been made in winter bean breeding in the last few years.

Now with a 17% yield advantage over Tundra, Vespa was first listed in 2018. In that time, it has met both market and farmer requirements, showing good performance across different growing seasons and conditions.

Vespa also has the bigger seed size and pale hilum favoured by the human consumption market.

With a protein content of 25.7% this puts Vespa on par with other winter bean varieties and makes it suitable for both the export market and for contracts that reward protein.

Senova also has two newcomers on the PGRO Descriptive List, both of which were bred by IBERS Aberystwyth. Vincent is a high yielding variety with a yield score of 108 on the latest list with extremely large seed, while Norton, which has a yield of 102 is an earlier variety.

"Establishment issues and spring drought were the two challenges for winter beans last year. Despite those, Vespa performed well and opened a yield gap with its competitors" Mike Stringer, Yorkshire.



"The crop was established with a Claydon drill. As at the middle of June, the crop looked good and healthy and had flowered well and we are looking forward to a good yield of beans"

Andrew Nightingale, Towcester

Welcome to the Estate Brand of premium grass seed mixtures. This range is named after some of the well-known farming estates in Lincolnshire and the surrounding counties.

Formulated in association with one of Europe's leading grass breeders, this new range brings together some of the top NIAB recommended varieties within each mixture. Focusing on high sugar content and digestibility as well as yield and disease resistance and persistence if applicable. Duncan Hendry, our Grass and Small Seed Specialist and I, have over 80 years of experience combined in the seed industry selling grass seed mixtures which is our main area of expertise.

Whether it is a short term or long term mixture for hay, silage, or grazing, we are confident that there is a mixture to suit. We are also happy to make any unique modifications that you may have.

As well as our new Estate Range we are still able to offer our range of standard organic grass mixtures which many of you have been happy with. Please see our website for the updated brochure for our organic standard mixtures. We are here to help advise and whether you choose from our standard or Estate range, we are sure you will be pleased with both the quality and price.



Simon Travers
SEED MANAGER

Aubourn 2 Year Short Term Ley (70% Organic)

4.50 kg	ORGANIC Shakira Diploid Italian Ryegrass
4.60 kg	ORGANIC Hunter Tetraploid Italian Ryegrass
3.90 kg	Cazzano Tetraploid Italian Ryegrass

13.0 kilos per acre

Belton 2 Year Short Term Red Clover Ley (70% Organic)

4.50 kg	ORGANIC Shakira Diploid Italian Ryegrass
4.25 kg	ORGANIC Hunter Tetraploid Italian Ryegrass
0.75 kg	Cazzano Tetraploid Italian Ryegrass
3.00 kg	Amos Red Clover

12.5 kilos per acre

— ABOUT

This grass mixture is formulated to provide large cuts of protein rich hay or silage. It can be grazed if required and is ideal for lamb fattening.

When ploughed, the red clover will leave good quantities of residual nitrogen in the soil for the following crop.

Belvoir 3-4 Year Medium Term Ley (70% Organic)

2.50 kg	ORGANIC Tetragraze Tetraploid Hybrid Ryegrass
3.25 kg	ORGANIC Perseus Festulolium
3.35 kg	ORGANIC Nifty Diploid Intermediate Perennial Ryegrass
3.90 kg	Nolwen Intermediate Tetraploid Perennial Ryegrass

13.0 kilos per acre

— ABOUT

This mixture will produce high quality forage whether it is cut or grazed, because of its perfect balance of hybrid and perennial ryegrass together with the inclusion of festulolium. If grazed, the sward will be productive for around 3 years. If cut, it should last well into the 4th year. The inclusion of festuliums will help to bring up nutrients from the soil as they are renowned for their deep root abilities. This mixture will also respond well to bagged nitrogen applications.

Buckminster 3-4 Year Organic Red Clover Ley (70% Organic)

2.60 kg	ORGANIC Tetragraze Tetraploid Hybrid Ryegrass
3.25 kg	ORGANIC Perseus Festulolium
3.25 kg	ORGANIC Nifty Diploid Intermediate Perennial Ryegrass
0.90 kg	Nolwen Intermediate Tetraploid Perennial Ryegrass
1.50 kg	Sangria Red Clover
1.50 kg	Global Red Clover

13.0 kilos per acre

— ABOUT

This medium term mixture is formulated for cutting which could be aftermath grazed if required. It will also provide high yields of protein rich hay or silage.

Red clover is relatively easy to establish and is higher yielding than white clover. Please do keep in mind this is perhaps not the best option for breeding ewes because of high oestrogen levels in the red clover.

Doddington 3-4 Year Organic White Clover Ley (70% Organic)

2.60 kg	ORGANIC Tetragraze Tetraploid Hybrid Ryegrass
3.25 kg	ORGANIC Perseus Festulolium
3.25 kg	ORGANIC Nifty Diploid Intermediate Perennial Ryegrass
2.40 kg	Nolwen Intermediate Tetraploid Perennial Ryegrass
0.50 kg	Brianna Very Large Leafed White Clover
0.40 kg	Dublin Large Leafed White Clover
0.60 kg	Buddy Medium Leafed White Clover

13.0 kilos per acre

— ABOUT

Ideal both for cutting and grazing, this mixture will produce a clover rich sward, full of protein and trace elements. The white clover will fix good quantities of atmospheric nitrogen which it will release into the soil for the grass to utilise. This ley will be more persistent than the shorter term mixtures.

Elsham Long Term Organic Ley (70% Organic)

2.10 kg	ORGANIC Nifty Diploid Intermediate Perennial Ryegrass
1.70 kg	Nolwen Tetraploid Intermediate Perennial Ryegrass
2.75 kg	ORGANIC Fojtan Festulolium
2.45 kg	ORGANIC Toddington Diploid Late Perennial Ryegrass
2.50 kg	ORGANIC Nashota Tetraploid Late Perennial Ryegrass
1.00 kg	Comtal Timothy

14.0 kilos per acre

0.40 kg	Briana Very Large Leafed White Clover
0.50 kg	Dublin Large Leafed White Clover
0.60 kg	Buddy Medium Leafed White Clover

— ABOUT

Organic Elsham is a flexible long term ley that can be cut for hay and silage, but will additionally provide high quality grazing for cattle or sheep.

The proportion of white clover within the mixture will also fix the atmospheric nitrogen to supply the companion grass that will add protein and trace elements to the animal's diet.

Harlaxton Organic Herbal Dual Purpose Ley (70% Organic)

1.25 kg	ORGANIC Fojtan Festulolium
1.25 kg	ORGANIC Donata Cocksfoot
1.00 kg	ORGANIC Dolina Timothy
1.75 kg	ORGANIC Diwan Tetraploid Intermediate Perennial Ryegrass
1.90 kg	ORGANIC Nifty Tetraploid Intermediate Perennial Ryegrass
1.10 kg	ORGANIC Laura Meadow Fescue
1.25 kg	Sainfoin
0.45 kg	Lucerne
0.40 kg	Alsike Clover
0.30 kg	White Clover Organic
0.40 kg	Birdsfoot Trefoil
0.35 kg	Sheep's Burnet

0.30 kg	Sheep's Parsley
0.35 kg	Choice Chicory
0.25 kg	Plantain
0.55 kg	ORGANIC Red Clover
0.15 kg	Yarrow

13.0 kilos per acre

— ABOUT

Herbal leys are an excellent provider of a balanced natural forage that will give good animal performance in terms of liveweight gain or milk production. Many of these herbs also contain trace elements that have been shown to have good health benefits for the stock that are grazing on these leys.

Whilst recent trends have been towards simple mixtures contain 3 or 4 varieties of ryegrass with a couple varieties of clover. A herbal mixture on the other hand, contains a diverse combination of species which all contribute to the sward.

Even though these mixtures tend to be more expensive in comparison to conventional ley, this mixture improves the performance and health of the animal.

Revesby Organic Herbal Light Land Ley (70% Organic)

2.20 kg	ORGANIC Fojtan Festulolium
2.50 kg	ORGANIC Donata Cocksfoot
1.30 kg	ORGANIC Dolina Timothy
2.00 kg	ORGANIC Diwan Tetraploid Intermediate Perennial Ryegrass
1.70 kg	Sainfoin
0.30 kg	Lucerne
0.40 kg	Alsike Clover
0.30 kg	White Clover Blend
0.25 kg	Birdsfoot Trefoil

0.35 kg	Sheep's Burnet
0.25 kg	Sheep's Parsley
0.35 kg	Choice Chicory
0.20 kg	Plantain
0.80 kg	ORGANIC Red Clover
0.10 kg	Yarrow

13.0 kilos per acre

— ABOUT

Formulated to perform as well as the Harlaxton mixture but designed for lighter soils with less ryegrass and more of the deeper rooted species such as Festulolium, Cocksfoot & Timothy.

Scawby Short Term Organic Overseeding Mixture (70% Organic)

3.50 kg	ORGANIC Hunter Tetraploid Italian Ryegrass
3.00 kg	Cezzano Tetraploid Italian Ryegrass
3.50 kg	ORGANIC Tetragraze Tetraploid Hybrid Ryegrass

10.0 kilos per acre

— ABOUT

This mixture is ideal for overseeding either damaged pastures or ones that are showing signs of wear. The mix can be directly drilled into the existing sward, or it can be broadcast which helps to extend the ley for a further 2-3 year. If broadcast, the sward should have just been cut or grazed for the best results.

A passing of a chain harrow will then open the sward and then after broadcasting the seed a roller, preferably a ring roller, should be used. This not only presses the setting into the soil but re-firms up the surface creating a better environment for the seed to germinate into.

Tattershall Long Term Organic Overseeding Mix (70% Organic)

2.75 kg	ORGANIC Tetragraze Tetraploid Hybrid Ryegrass
2.25 kg	Perseus Festulolium
4.25 kg	ORGANIC Diwan Tetraploid Intermediate Perennial Ryegrass
0.75 kg	Nolwen Tetraploid Intermediate Perennial Ryegrass
0.75 kg	Briana Very Large Leafed White Clover

10.0 kilos per acre

— ABOUT

This overseeding mixture is designed to improve a ley which is due to be down for a further 4-5 years.

— SPECIAL MIXTURES

We are happy to quote for any mixture of your own formulation. Please contact us for price and availability.

Simon Travers -
01529 421081
simon@copeseeds.co.uk

Duncan Hendry -
07732 711356
duncan.hendry@copeseeds.co.uk

"I have been impressed with Copes grass seed and service. They formulated a 3 to 5 year organic ley over the last 7 years to meet my requirements and I am impressed with the results."

Paul Badcock, Cornwall

— SUBSTITUTIONS

Cope Seeds stock an extensive range of grass seed varieties, but there may be a variety listed in the brochure which is not available. Cope Seeds & Grain reserve the right to substitute any unavailable variety with a suitable alternative.



Organic Arable Silage Mixtures

Arable silage mixtures are an ideal addition or alternative to grass or maize silage. Quick growing, these mixtures can be taken for silage in 10-12 weeks from sowing or left until 14 -16 weeks to be harvested as whole crop.

At a reduced seeding rate, arable silage mixtures can act as an excellent nurse crop to an undersown grass ley although for successful grass establishment, the arable silage mixture should be harvested no later than 10-12 weeks from sowing.

When thinking about which mixture to choose please bear in mind that there is a large differential in the thousand grain weight of barley (50g), oat (45g), pea (250g) and vetch (50g) so this should be born in mind when selecting the right mixture for your needs.

All mixtures are 70% organic and therefore meet the minimum requirements of the organic certification bodies to be accepted for organic production as either silage or wholecrop. Please be aware that if these mixtures are taken through to the combining stage and are harvested as grain, then a 100% organic mixture must be sown. Like grass mixtures, a derogation form must be submitted but this can be done retrospectively.

Arable Silage Number 1

Probably the most widely sown arable silage mixture, this mixture is high on the barley content with the peas adding a useful protein boost to the mix. This should give a ratio by number of seeds of 85% barley and 15% peas.

60% ORGANIC Spring Barley
10% ORGANIC Spring Peas
30% NON-ORGANIC Spring Peas

Arable Silage Number 2

This mixture, with it's higher pea content will produce a silage or wholecrop that is higher in protein than mixture number 1 and will also leave a useful amount of residual nitrogen for the following crop.

By number of seeds, this should give a ration of 75% barley & 25% peas.

40% ORGANIC Spring Barley
30% ORGANIC Spring Peas
30% NON-ORGANIC Spring Peas

Arable Silage Number 3

A traditional mixture containing oats as well as barley, oats tend to do well in less favourable conditions or areas of high rainfall.

By number of seeds, this should give a ratio of 41% barley, 47% oats & 12% peas.

30% ORGANIC Spring Barley
30% ORGANIC Spring Oats
40% NON-ORGANIC Spring Peas

Arable Silage Number 4 (New)

A high protein, lower carbohydrate mixture which should also provide large amounts of residual nitrogen for any following crop.

The ration by number of seeds for this mixture should be 55% barley, 26% peas & 19% vetches.

30% ORGANIC Spring Barley
40% ORGANIC Spring Peas
20% NON-ORGANIC Spring Peas
10% NON-ORGANIC Spring Vetch

MULIKA

SPRING WHEAT

The UK's leading Group 1 spring wheat



Tel 01223 890777
Email info@senova.uk.com
[@SenovaLtd](https://twitter.com/SenovaLtd)
www.senova.uk.com

Late autumn or spring sown, **Mulika** continues to lead the field, with premium quality, resistance to orange wheat blossom midge and excellent all-round disease resistance.

Flexibility, performance and quality in one variety
... that's Mulika.

Mulika Spring Wheat

— INFORMATION

- Established bread making variety
- Orange blossom midge resistant
- Milling premium potential

— ABOUT

A Group 1 spring wheat variety with resistance to orange wheat blossom midge, Senova's Mulika is a proven performer with end market appeal. With its flexible drilling window – from November right through until April – the variety can be used to help spread workload pressures, deal with unpredictable weather events and make the most of optimum establishment conditions.

As Jeremy Taylor, commercial director at Senova explains: "Mulika has a very loyal farmer and miller following, reflecting its role in resilient cropping strategies and ability to cope with whatever the season brings. Mulika can be drilled any time from November through to April, allowing it to go into the ground in optimum establishment conditions. This drilling date flexibility is matched by good disease resistance scores and superb grain quality."

VARIETY	UNTREATED YIELD (% CONTROL)	MATURITY	YELLOW RUST	ORANGE BLOSSOM MIDGE RESISTANT	PROTEIN (%)	HAGBERG	SPECIFIC WEIGHT (KG/HL)
Mulika	79	0	6	Yes	13.8	332	77.0
KWS Fixum (Feed)	80	+1	7	No	12.9	231	77.6
KWS Cochise (Group 2)	82	+1	4	Yes	13.4	250	78.6

KWS Ladum

— INFORMATION

- **New Variety**
- **Milling quality**



— ABOUT

A high yielding group 1 variety, KWS Ladum has a high level of protein combined with the highest Hagberg Falling Number of any Group 1 variety on the current AHDB recommended list. KWS Ladum has an excellent specific weight with disease scores as good as or better than Mulika. Availability will be tight for Spring 2024 so we advise booking early.

If you are interested, please get in touch with the office on **01529 421081** or **simon@copeseeds.co.uk**

"Fully approved by UK Flour Millers at the highest group 1 quality standard, KWS Ladum is high yielding, rated a highly significant 8% above the current market leading group 2 variety Mulika and 7% above the other newer group 1 variety Nissaba when sown in the spring slot."

Dr Kirsty Richards, KWS.

Everlong Spring Wheat - It's Music to your Ears

— INFORMATION

- **Automatic progression to RL Stage**
- **Highest yield of any listed and candidate variety**
- **Highest specific weight of any listed and candidate variety**

— ABOUT

Everlong is in final year Recommended List trials and its place on the list will be decided in November 2023. After successfully completing NL2 trials, the results were that good, it was an automatic progression into final year trials. It is currently the highest yielding variety with the largest specific weight of any listed or candidate variety. We are extremely excited about Everlong's potential to add agronomic improvements on farm whilst still offering milling potential to the end users.

Seed will be in short supply and we are looking for excellent seed growers in Spring 2024 to ensure we have good supplies in Spring 2025. If you are interested please get in touch with tom. **siswick@copeseeds.co.uk** or **gemma@copeseeds.co.uk**

VARIETY	YIELD	RIPENING (+/- MULI- KA)	HEIGHT (CMS)	YELLOW RUST	BROWN RUST	S.TRITICI	MILDEW
EVERLONG	107	-1	83	7	7	7	8
Kws Cochise	99	1	82	4	9	6	8
Mulika	97	0	83	7	9	7	7
KWS Ladum	102	0	75	6	7	7	8

Evelina Spring Barley

— INFORMATION

- Established feed barley variety
- Extremely clean
- High untreated yield potential
- Tall straw with high straw yields
- Very vigorous & competitive to weeds

— ABOUT

Proving itself over the past 8 years to be a reliable and consistent performer, Evelina is easy to manage and provides high grain and straw yields. Quick to establish and with a growth rate faster than other varieties, this makes Evelina particularly competitive to any weed contamination and to a later spring sowing should conditions dictate. It is the tallest variety in our portfolio and probably the tallest variety still commercially available with a height akin to varieties from the past such as Hart and Dandy. Evelina is early to mature.



"I was very happy with my Evelina, I grew both Evelina & Westminster and my Evelina out-yielded the Westminster. The straw yield from Evelina was also greater, and was 7-10 days earlier too which is another benefit. The Evelina was 6 inches taller and I was worried it would go down, but it stood well. I didn't notice any disease pressures in the Evelina and I would certainly grow it again."

George Williams, Wales

Laureate Spring Barley

— INFORMATION

- Malting variety with premium earning potential
- 2nd highest untreated yield potential
- Performs across all regions and soils

— ABOUT

Laureate is fully approved for both distilling and malting but with its high untreated yields, resistance to brackling and good all-round disease resistance, it is just as much at home as a feed barley. It is also a reliable performer in all areas of the UK and all soil types.

VARIETY	UNTREATED YIELD (% CONTROL)	HEIGHT	MILDEW	RHYNCHOSPORIUM	APPROVAL FOR BREWING	APPROVAL FOR DISTILLING
Laureate	94	69	9	5	Yes	Yes
RGT Planet	90	72	8	5	Yes	No
LG Diablo	92	71	9	5	Yes	Yes

AHDB Recommended List 2022/2023

Westminster Spring Barley

— INFORMATION

- **Malting or feed**
- **Good straw yield potential**

— ABOUT

Westminster is still widely used for malting but is also a good choice for feed due to its high untreated yields. Westminster has a good straw length combined with excellent disease resistance and a high specific weight.

Naked Oats

— ABOUT

Did you know that we are one of the few representatives of Spring Naked Oats in the UK?

We successfully supply and contract back large volumes of Naked Oats within the conventional sector, giving growers the premiums and the security that they need. We are now doing the same with organic growers and have several organic growers growing for premium domestic outlets this season. It is our plan to continue working hard to create an even larger market for organic Naked Oats and are currently working with a few interested parties overseas. If you have any interest in growing Naked Oats organically, please get in touch for further details.



Santini, Naked Spring Oat



— ABOUT

We are actively looking for organic naked oat growers for a gluten free contract. The contract is a 3 year contract, demonstrating commitment by the end user. If you are interested, please get in touch with Tom, Tom.desborough@copeseeds.co.uk.

VARIETY	POWDERY MILDEW (1-9)	CROWN RUST (1-9)	HEIGHT (CM)	LODGING %	YIELD (T/HA) @ 15% M.C.	SPECIFIC WEIGHT (KG/HL)
Santini	5	5	118	0	5.55	57.0
Oliver	5	4	128	5	5.47	54.8
Lennon	3	4	107	35	5.40	48.6
Marco Polo	5	4	116	0	4.79	57.0
Madison	7	-	126	75	3.20	41.3

Agrii 2021/2022 Private Trials

Merlin Spring Oat

— INFORMATION

- High treated & untreated yields
- High specific weight & kernal content
- Lowest screening losses of any spring oat variety
- Outstanding disease resistance including an 8 for mildew
- Early to mature
- Best standing of any variety scoring a 9 for lodging

— ABOUT

Merlin is an outstanding new addition to the spring oat market which delivers an unrivalled combination of yield, agronomic features, and disease resistance. Merlin is suited to all regions in the UK and produces high quality oats when grown either organically or conventionally.

VARIETY	YIELD
Merlin	98
Canyon	96
Lion	83
WPS Isabel	88

"Kernel content is very good and dehulling looks suitable. The screenings were low and the bushel weight was very good. We buy a great deal of organic gluten-free oats for export and the UK and are very keen to support improved varieties for both growers and millers."

Glebe Farm

VARIETY	RESISTANCE TO LODGING 1-9 (NO PGR)	RIPENING	MILDEW 1-9
Merlin	7	-1	8
Canyon	7	-1	8
Lion	6	-2	3
WPB Isabel	7	0	5

(AHDB 5 Year Mean)

VARIETY	KERNEL CONTENT	SPECIFIC WEIGHT (KG/HL)	SCREENINGS (%)
Merlin	71.3	51.2	1.8
Canyon	71.3	51.4	3.0
Aspen	75.0	50.0	2.3
Delfin	73.0	53.5	2.2

(AHDB 5 Year Mean)

"Merlin established well and has strong disease resistance. It was harvested on the 22nd of August and despite the catchy weather at the time, it was standing well and combined easily. The yield was 69t from 9.3ha in a tough year. This was a better yield than other spring oats we were growing so I am optimistic that Merlin will be a good variety to grow as it becomes more widely available."

Richard Monk, Hampshire Arable Farmer

— ABOUT

We have mills actively looking to procure Merlin. If you are intrested in our buy back contract please get in touch with Tom, Tom.desborough@copeseeds.co.uk.



Somtri Spring Triticale

— INFORMATION

- Produces high grain yields
- Low input variety
- Suitable for drought-prone land
- High resistance to fusarium and ergot
- Tall variety, suitable for fodder or whole cropping for AD

— ABOUT

Somtri is an established German triticale which has been grown conventionally and organically in the UK for over 10 years. It produces high grain yields and is a consistent performer, in both treated and untreated conditions.

Somtri has long straw but excellent resistance to lodging. Due to its height, it can smother out weeds, but it's also stable with few incidences of lodging due to its deep root system. Because of its strong root development, Somtri may tap into nutrients and water from deeper soil layers, making it a very tolerant variety to stressful situations. The variety has a low susceptibility to fusarium and ergot giving a production of healthy and unpolluted fodder.

Somtri is an incredibly versatile variety. It's able to perform on drought prone land to heavy clay and can be drilled from November right through to April/March time.

Untreated yield (t/ha) results - 2019

TRIAL SITE	LEADENHAM (LINCS)	THROWS (ESSEX)
Somtri	3.7	4.6
Trimour	2.9	3.5
Dublet	3.9	4.7

(Agrii harvest 2019)

Treated yield (t/ha) results - 2019

TRIAL SITE	LEADENHAM (LINCS)	THROWS (ESSEX)
Somtri	5.39	7.05
Trimour	5.37	5.93
Dublet	5.06	5.96

(Agrii harvest 2019)

VARIETY	SPECIFIC WEIGHT	CROP HEIGHT
Somtri	76.3	105.0
Trimour	75.8	95.0
Dublet	73.9	101.7

(Agrii harvest 2019)



Triticale/Lupin Mixtures

Triticale/Lupin mixtures are an excellent alternative to barley, oat and pea mixtures when harvested as whole-crop and offer the same flexibility with lower inputs and excellent feed values.

— TRITICALE/WHITE LUPIN MIX

The most popular Triticale/Lupin combination which should produce a high bulk, high protein forage. Some growers have seen yields on a par with Forage Maize but with protein, energy values and palatability that have allowed concentrates to be lowered by as much as 50%. Typical yields for this mixture should be around 14-19 tonnes per acre fresh yield at a DM of 25-30% with an ME of 11.0-12.0 MJ/Kg and a Crude Protein of 13-17%.

Sown at 75 kilos per acre, this should be done between March and Early May and wholecrop harvested in late August. This will give time for the land to be prepared for an autumn sowing of a grass ley, catch crop forage or a winter cereal. This mixture could be undersown with Italian Ryegrass for extra grass in the Autumn and following spring and is ideal for both organic and conventional growers looking for a low input crop.

— TRITICALE/BLUE LUPIN MIXTURE

This mixture is ideal for sowing in the North and the South West in situations where earliness and disease resistance are key factors. The quality is similar to the Triticale/White Lupin mixture although yields tend to be slightly lower due to the earlier harvest date. It is suitable for both low input and fully organic systems with an expected FW yield of 12-15 tonnes per acre with a DM content of around 25-30%, an ME of between 11 and 12 MJ/Kg and a Crude Protein level of between 13 and 17%.

This mixture should be sown at 60 kilos per acre in early to late April and should cut a wholecrop in mid-late August which like the White Lupin mixture will give time to prepare the land for a following crop of grass, catch crop forage or winter cereal. This mixture can also be undersown with a grass ley.



The Winter Bean creating a real buzz!

With the highest yields on the PGRO Descriptive List, excellent standing ability and large grain, pale hilum variety Vespa is the perfect choice for your rotation and the feed and export markets.

Other Senova winter bean varieties:



Winter beans – the perfect fit

Yield benefit for the following wheat crop

Low growing cost

Good break crop gross margin

Good opportunity to control grass weeds

Ready markets for feed and export use

Spring Rye

Rye grain is proving to be extremely popular among food and health lovers across the UK.

It's versatility is a key part of its marketability and it has many uses including flour, rye bread, rye beer, crisp bread, some whiskeys, some vodkas, and animal feed. It can also be eaten whole, either as boiled rye berries or by being rolled, similar to rolled oats.

Rye grows well in much poorer soils than those necessary for most cereal grains. It is an especially valuable crop in regions where the soil has sand or peat. Rye plants withstand cold better than other small grains do.



Boyko Spring Rye

NEW

Fast becoming the Spring Rye of choice.

— INFORMATION

Boyko Spring Rye is a new outstanding variety which has a high yield potential and very early heading. Its high resistance to fungal diseases means it's a low input variety and is suitable for both conventional and organic farming.

VARIETY	YIELD T/HA	PROTEIN	SPECIFIC WEIGHT (KG/HL)
BOYKO	2.56	9.5	76.83
Ovid	2.31	8.68	76.83
SM Stefano	2.58	9.3	77.03
SM Ananke	2.39	9.4	76.78

Trials with Dr Rosemary Hall Harvest 2022



Victus Spring Bean

PREMIUM BUY BACK CONTRACT AVAILABLE

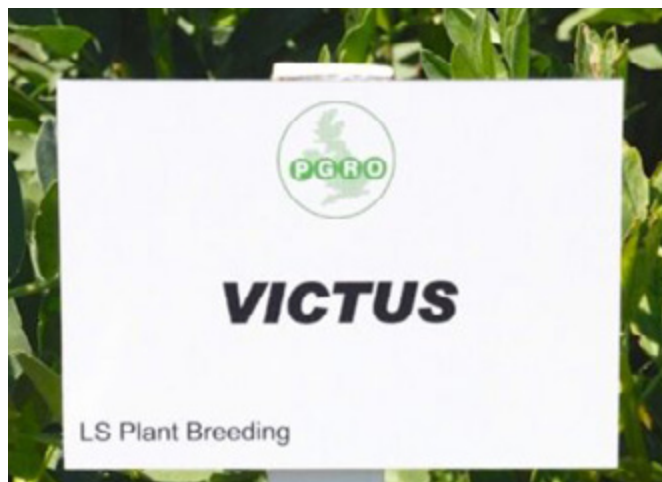
The only feed bean contract paying a premium!

— ABOUT

- **Premium Earning Potential**
- **Established and Consistent Variety**
- **Straight or Bi Crop Contracts available**

— INFORMATION

This will be the 5th year that we are able to offer Victus as part of our portfolio. Victus is a low vicine and convicine bean, offering the end user added benefits, particularly when added to layers hens and broiler diets. This feature that caught the eye of Mole Valley farmers and we are now able to offer a buy back contract on Victus with a £30 premium over the standard organic feed bean price, a first in the industry which we are extremely proud to champion. Victus is an early maturing variety with higher yields than established varieties like LG Cartouche and Vertigo according to the PGRO descriptive list.



Eso Peas

— INFORMATION

Eso is a medium to late maturing yellow pea variety. It is medium tall with an excellent standing power and disease resistance, especially to Ascochyta pisi. It is equally suited to both forage and grain production.

LG Aviator Peas

— ABOUT

- **Established Combining Variety**
- **Green Seeded Pea (Blue)**
- **High Downy Mildew & Powdery Mildew Resistance**
- **Large Thousand Seed Weight**
- **High Protein**

— INFORMATION

LG Aviator has yields 3% higher than Prophet according to the latest PGRO descriptive list. A medium height variety with good standing ability, LG Aviator has a good protein content combined with good resistance to Downy Mildew as well as having high resistance to Powdery Mildew and is also resistant to Peas Wilt (Race 1).



Choosing the right seed treatment for organic and regenerative farming

There are many farm practices and products aimed at protecting or maintaining yield but if the crop does not establish then it is game over before you even start.

Seeds are incredible units of energy and genetic information but the environment in which they are sown might not be completely beneficial; so what strategies do we have for increasing their survival? First of all; variety choice will give the greatest genetic potential for success so make sure that you choose the best variety for your farm conditions. There are then a few management decisions such as adjusting seed rate to drill date, pest pressure and soil conditions that will set the crop up for a healthy stand, avoiding lodging and diseases and finally, you can treat your seeds to give them that edge to increase the chances of establishment.

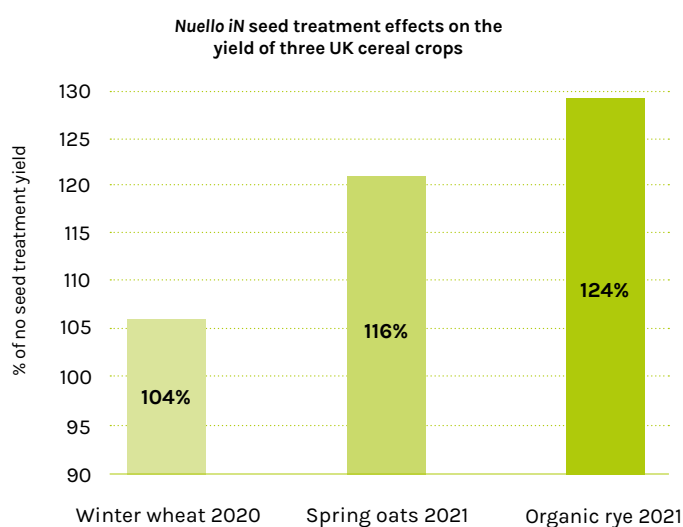
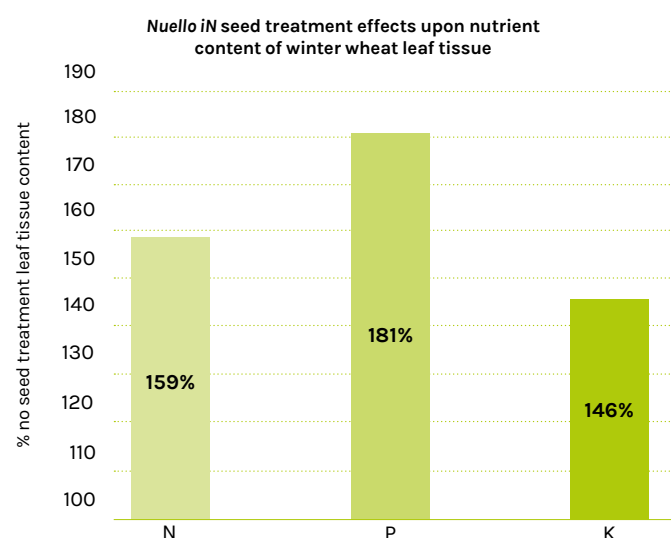
Seed treatments are an effective way of using low doses of active ingredient right on target, reducing negative impacts on the environment. Conventionally, the active ingredients are pesticides that protect the seed by killing off pests and pathogens but, in recent years, the emphasis has been shifting towards enhancing seed development and / or promoting healthy seed-soil interaction for resilient growth

– a more pro-active and positive strategy that fits with organic and regenerative farming.

There are two main approaches to these “regenerative” type seed treatments:

- Biological – using micro-organisms to enhance the development of seedlings
- Biostimulant – using chemistry such as amino acids, trace elements & seaweed extracts

Biological seed treatments include Newton and Nuello iN which uses a blend of endophytes (beneficial micro-organisms that live in the plants tissues and grow with the crop). These endophytes fix nitrogen and sequester phosphorus, potassium and zinc and make the crop more tolerant of stress.





Newton®
BIOSTIMULANT SEED TREATMENT

Plant health is **EVERYTHING**

Newton® makes our crops
more efficient & resilient
through its unbelievable
rooting & tillering benefits

Matt Waldie, Farm Manager
Farming regeneratively in North East Fife



Stimulates plants to thrive naturally

- ✓ Stronger establishment from day 1
- ✓ Supports plant microbial symbiosis
- ✓ Reduces reliance on synthetic inputs
- ✓ Proactive approach to managing stress

www.interagro.co.uk



SCAN ME

Scan the QR code for more
information on Newton
& Matt's regenerative
farming journey

Organic Market Update

We're still positive in the future of organics.

Well, this year has been yet another interesting one, looking back over the last few years of these market write ups we have had, Covid19, an invasion of Ukraine, shipping costs going through the roof, wet autumns, dry springs oh and let's not forget about Brexit.

This year as a comparison feels relatively quiet, I mean we have still had plenty to deal with as high prices has meant demand has been lower year on year. Avian flu meaning demand for grains have been lower than previous years and autumn 2022 drilling season was very kind so plenty of crops went in very well.

Demand at harvest 2022 seemed to be good, with end users wanting to get out and secure their required tonnage for the upcoming season. What we saw from the organic harvest 2022 included:

- Milling wheats tested high proteins with some very big Hagberg's.
- Malting Barley was more than plentiful, especially as it's a very small market in the UK, we rely on export to get significant tonnage away.
- Protein Crops seemed to yield well across the UK.
- Winter and Spring oats both seemed to test very well with some big bushel weights.

The earlier purchasing of the premium crops took their requirements out of the market later in the season, leaving the feed compounders to buy their requirements but they seemed to only want to buy a few months in advance. This trend then followed for the rest of the season. With this hand to mouth marketing, selling opportunities have been few and far between, the buyer has only wanted to buy a few loads in some cases at a time. This has meant that the market has been on a constant slump as usage has been down and there has been more growers wanting to sell into these smaller slots compared to the tonnes needed by the homes.

The reduction in demand has meant that over the course of the season values have slipped back from the VERY big figures being talked about and traded at harvest and early in the season to premiums over conventional that are more akin to 'normal years' (If there is such a thing).

The big question is where do we see values for new crop well as I said demand has been slow and lower than normal, avian flu

hasn't yet gone away and the cost of living is still very much in everybody's mind. Net result is demand is back.

To compound that, autumn was very kind, we have continued getting seed orders until very late in the drilling window, so could we expect large yields and a big organic crop coming forward? I think possibly yes we do, in which case, if demand continues to remain low and supply of UK grain is up we need some innovative thinking and action.

We as a company work hard to make sure we have supply agreements into homes, this allows us to contract tonnage of most crops and offer buy back contracts. This guarantees a market and movement of your crops, which is also managing risk and with the above paragraph in mind I see it as being even more important.

Both Gemma and I feel it's important to support the UK organic Farmer, this has meant different things since I joined the business. Originally, we kept our focus on finding homes for UK grain by developing buy back contracts and strengthening existing relationships with homes. We have opened up several homes that only a few years ago we weren't doing business with. In the last 6 months, we have turned our attention to export and what we can bring doing into Europe post Brexit. We have so far developed some great working relationships that have meant we have already started to do some export of niche grains. Once new crop is in, we hope to be able to supply larger tonnages that will end up on the continent.

Which in turn should ease our low demand / high supply of grain.... we hope.



Tom Desborough
SENIOR GRAIN TRADER

NUELLO[®] iN: ALWAYS ON Nitrogen Generation

Use to improve crop nitrogen use efficiency to help optimise farm nitrogen programmes

syngenta



✓ Recommended on
Winter barley



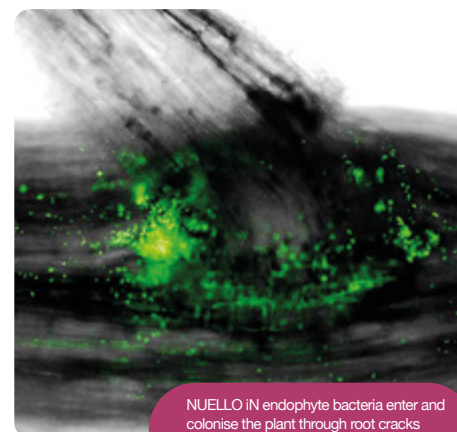
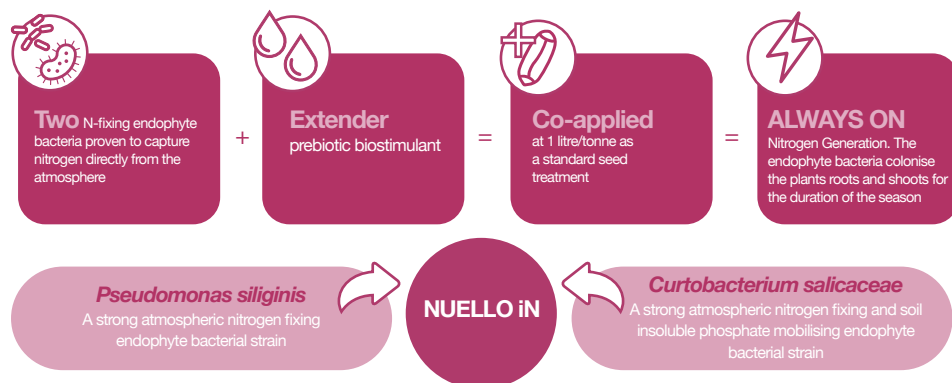
✓ Recommended on
Winter wheat

- NUELLO iN is a biological seed treatment containing a unique blend of nitrogen fixing endophyte bacteria that are proven to capture nitrogen directly from the atmosphere
- NUELLO iN endophyte bacteria colonise the plant and supply the crop with ALWAYS ON Nitrogen Generation for the duration of the season
- NUELLO iN enhances crop biomass and root development for improved nutrient scavenging from the soil

Trials have shown NUELLO iN nitrogen benefit equivalent to up to 30 kg N/ha

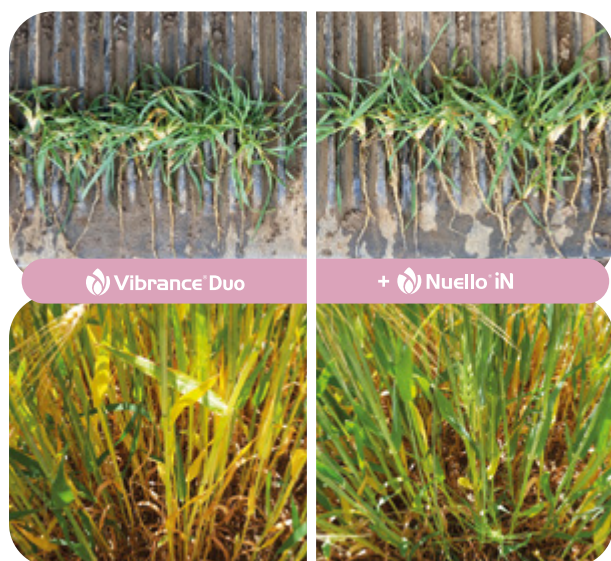
What is NUELLO iN

NUELLO iN (endophytes) + Extender = NUELLO iN Seed Treatment



NUELLO iN endophyte bacteria enter and colonise the plant through root cracks and fix nitrogen from the atmosphere for the duration of the season

NUELLO iN benefit when nutrients become limiting:



SY KINGSBARN hybrid barley NUELLO iN rooting benefit assessed February 2022 and clear greening benefits observed June 2022

- 2022 was an extremely hot and dry season. The main nitrogen timing in both the winter wheat and hybrid barley nitrogen trials at our light land, Newark site was applied during extremely dry April weather limiting nitrogen uptake
- NUELLO iN treated plots displayed clear rooting benefits, clear greening benefits, higher chlorophyll levels and reduced crop stress to extend the grain fill period
- NUELLO iN gave an average yield benefit of 0.5 t/ha in the winter wheat and 0.3 t/ha in the hybrid barley

When to use NUELLO iN

- 1. Complement current nitrogen strategies:**
Apply NUELLO iN to complement standard nitrogen applications as an additional source of N to enhance yields. A great insurance policy especially in situations when nutrients become limiting, for example, dry soil conditions limiting nitrogen uptake
- 2. Manage nitrogen limiting situations:**
Use NUELLO iN on soil types and in rotational positions where access to nitrogen from the soil may be limited. Trials have shown NUELLO iN has an excellent yield benefit on light/shallow land sites and in second cereals
- 3. If synthetic N input reductions are planned**
apply NUELLO iN to help maintain yield targets. Trials have shown NUELLO iN can replace up to 30 kg N/ha*

FIND OUT MORE AT [SYNGENTA.CO.UK](https://www.syngenta.co.uk)

@SYNGENTAUK

VIBRANCE[®] Duo (MAPP 17838) contains fludioxonil and sedaxane. VIBRANCE[®] Duo and NUELLO[®] iN are Registered Trademarks of a Syngenta Group Company. All other brand names used are Trademarks of other manufacturers in which proprietary rights may exist. Use plant protection products safely. Always read the label and product information before use. For further product information including warning phrases and symbols refer to www.syngenta.co.uk

*Consult a FACTS Qualified Adviser for advice and guidance on nitrogen applications. Trials have shown NUELLO iN can replace up to 30 kg N/ha based on a reduction from the standard 100% nitrogen RB209 recommendation. RB209 recommendations are based on a break-even ratio of 5.0 (cost of fertiliser nitrogen as £/kg N divided by value of grain as £/kg). Recommended not to reduce N in milling wheats to maintain % grain N

Cope Seed Team



Gemma Clarke
MANAGING DIRECTOR

"I have the job of keeping this unruly mob in line and overseeing each part of our business. My main passion is varietal development, working with breeders, trialing their material, and bringing forward varieties with grower and end user benefits. Outside of work I'm kept busy by my family acting as the local taxi service to ensure they get to clubs. If I can find time in between work and children, I love to play tennis, horse-ride and go to the gym."



Simon Travers
SEED MANAGER

"I started with Cope Seeds in January 2012 having been in the seed trade since 1975, having started straight from school as Office Boy at Charles Sharpe & Co, taking over from a certain Trevor Cope! Since joining Copes as Grass and Small Seeds Manager, I have branched out into cereal seeds as well as forage and now involved in the day to day management of all seeds within the company as well as forward planning of production and processing. Outside of work, my main interests are Railways, Lincoln City Football Club and the occasional glass of cask ale"



Duncan Hendry
GRASS SEED SPECIALIST

"My passion in life is working with farmers. My role involves advising on crops for each individual requirement, using my many years of experience in the field, listening to what you are trying to achieve, whether it be arable or forage cropping. My moto is to work with and for farmers whatever the time of day. Outside of work I like to work. My farmer contacts work 24/7 and so will I when required!"



Tom Desborough
SENIOR GRAIN TRADER

"I came to Copes 2 years ago, coming from the conventional farm trader role. I take so much pleasure from working within the organic sector as it aligns with my own beliefs and passions. I really enjoy connecting with new people and creating innovative new contracts which are focused around sustainability. I do have a life outside of work, I am nearing completion of a renovation project on an old barn, I have a motor bike and along with some friends tour every year, last year with covid we did the North Cost 500 and this year we are heading to the south of Germany. I also enjoy kite surfing and sailing."



Nikki Doughty
ACCOUNTS & OFFICE MANAGER

"I am responsible for overseeing grain movement, grain/seed administration & company rottweiler when chasing bills. My hobbies change like our weather, I am currently enjoying growing potatoes, cucumbers, courgettes & strawberry's. I enjoy the sunshine and long walks with my dachshund."



Kat Diggins
GRAIN ADMINISTRATOR

"Kat's role involves processing grain contracts, orders and invoices, organising haulage and ensuring organic certification and farm assurance records are kept up to date. An interesting fact about Kat is that she has a degree in Law!"



Tom Siswick
SEED SPECIALIST & TRADER

"I've been working in the seed trade for 9 years, much of my experience is within cereal seed production which includes Hybrids. I am very passionate about building relationships with all customers as this is at the very core of what we do. Second to this are my interests, which include new on-farm technologies, game and wildlife conservation, and cricket."



Mole Valley
FARMERS
Feed Solutions

Helping you meet all your organic farming needs

**Committed to helping our organic farming
customers increase productivity and profitability**

- Unrivalled organic product range
 - Compound feed and meals
 - Minerals straights
 - Mineral buckets
 - Milk powders
 - Silage additives
 - Grass seed mixtures
- Competitive pricing
- Organic audits available
- Working with local farmers to produce UK sourced proteins
- Dedicated to buying direct from UK farmers, contact the team for further details 01769 575661
- Regular market updates available

For all your organic needs contact the Feed Team

T: 01278 444829 E: feeds@molevalleyfarmers.com

or your dedicated organic feeds trader Chezzzy Metherell

T: 07790 821402 E: francesca.metherell@molevalleyfarmers.com

MOLEONLINE.COM

 **Committed to
UK AGRICULTURE**



Cope Seeds & Grain Ltd

The Seed House
Pride Parkway, Sleaford
Lincolnshire, NG34 8GL

☎ +44 (0) 1529 421081
✉ info@copeseeds.co.uk
🌐 www.copeseeds.co.uk
🐦 @copeseeds



www.copeseeds.co.uk