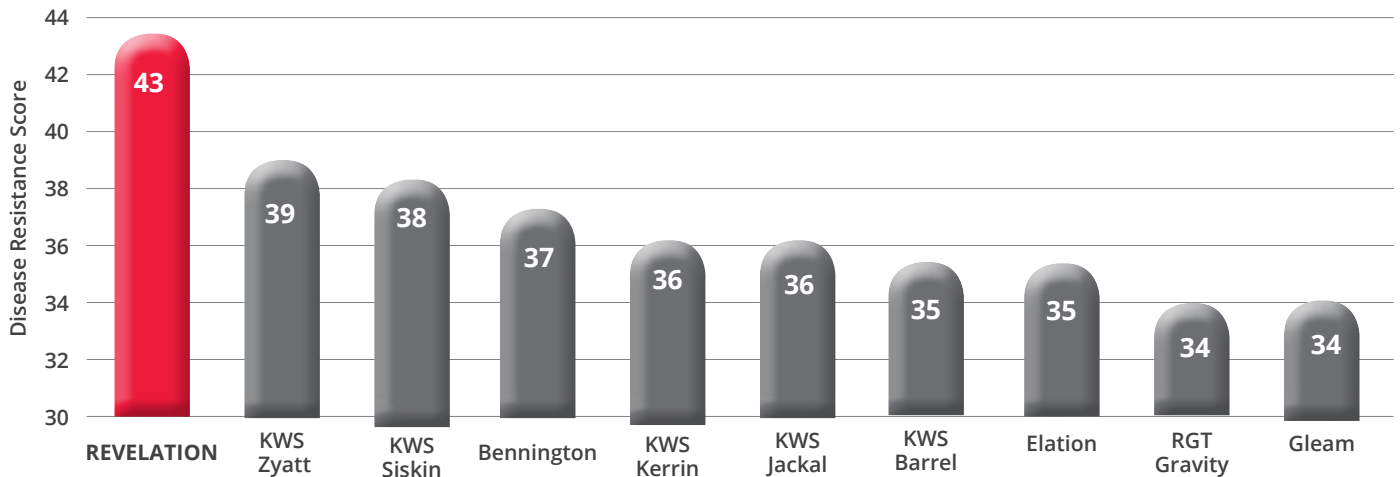


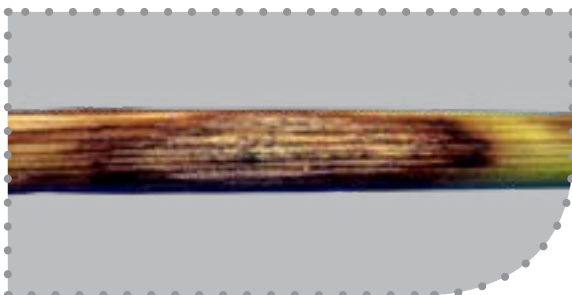
From its introduction in 2013, Revelation became a very successful commercial variety and has continued to maintain a significant market share, based on its reputation for excellent risk management. Revelation is a high yielding soft endosperm feed variety, with excellent agronomic characteristics of stiff straw and a strong disease resistance profile, offering growers a premium 'low risk' wheat variety in today's volatile climate and grain markets.

DISEASE RESISTANCE:



The above graph is a Limagrain combined disease resistance score that compares Revelation to key commercial varieties, as well as new additions to the list (Septoria Nodorum rating not included).

Revelation may not appear to have high yield potential based on the AHDB Recommended List, but the results do not reflect yields that growers achieve on-farm. Revelation's disease resistance is a valuable asset throughout seasons of high disease pressure, giving growers a degree of security, particularly if fungicide treatments are delayed, due to adverse weather patterns. More importantly, it shows no significant yield penalties compared to more disease-prone varieties when grown under high disease pressure.



Revelation carries the Pch1 Rendezvous resistance gene to eyespot



Revelation is rated highly for its yellow rust resistance

Continues over...



Parentage: (Alchemy x Claire) x Shepherd

Breeder's Reference: NAWW 39

Trial Status 2019/20 UK Recommendation

AGRONOMIC CHARACTERISTICS:

	REVELATION	KWS Jackal	Elation	Bennington	Leeds
Lodging without PGR	7	7	7	7	7
Lodging with PGR	8	7	8	8	8
Height (cm)	85	85	81	90	85
Ripening (+/- JB Diego)	+3	+1	+1	+2	+2



Revelation is medium height with very good resistance to lodging, with an 8 rating in PGR treated trials on the AHDB RL 2019/20. This is an important attribute, especially for a variety that has the capabilities of being sown in the earlier drilling slot.



Revelation is a later maturing variety. Late maturing varieties should be used in conjunction with earlier maturing varieties, as a tool for spreading risk against erratic weather patterns during harvest. Interestingly, for the North where early drilling is essential, growers have seen Revelations high yield potential, but its later maturity must be taken into account across specific regions when deciding on T3 fungicide applications.

DISEASE RESISTANCE:

	REVELATION	KWS Jackal	Elation	Bennington	Leeds
Mildew	6	7	7	7	3
Yellow Rust	9	9	9	6	6
Brown Rust	8	5	6	7	7
<i>Septoria tritici</i>	6.3	4.9	4.3	6.3	4.6
Eyespot	8@	4	4	4	4
Fusarium Ear Blight	7	6	6	6	7

@ = believed to carry the Pch1 Rendezvous resistance gene to eyespot but this has not been verified in Recommended List tests.



Even compared to new varieties added to the AHDB RL, Revelation still has a very impressive disease resistance package, helping to protect maximum yield potential on-farm.



Revelation has a high untreated yield; a consequence of having the best disease resistance profile of all varieties on the 2019/20 AHDB RL. It is essential that we use both plant resistance and fungicide chemistry as a synergy to ensure the longevity of both variety and chemistry efficiency for the future.

GRAIN QUALITY:

	REVELATION	KWS Jackal	Elation	Bennington	Leeds
Protein Content (%)	11.5	10.9	11.4	11.4	11.3
Hagberg Falling Number	257	177	209	245	221
Specific Weight (kg/hl)	76.5	76.1	77.8	77.6	78.1



Revelation's grain quality is still comparable to, if not better than, the newer varieties entering the market, offering growers several outlet opportunities and showing good distilling performance and suitability for export, biofuel and animal feed markets.

January 2019. Data from the AHDB Recommended List 2019/20. On the 1-9 scales, high figures indicate that a variety shows the character to a high degree.



Limagrain UK, Rothwell, Market Rasen, Lincolnshire, LN7 6DT
 Tel: 01472 371471 Email: enquiries@limagrain.co.uk
 www.lgseeds.co.uk @LGSeedsUK

