



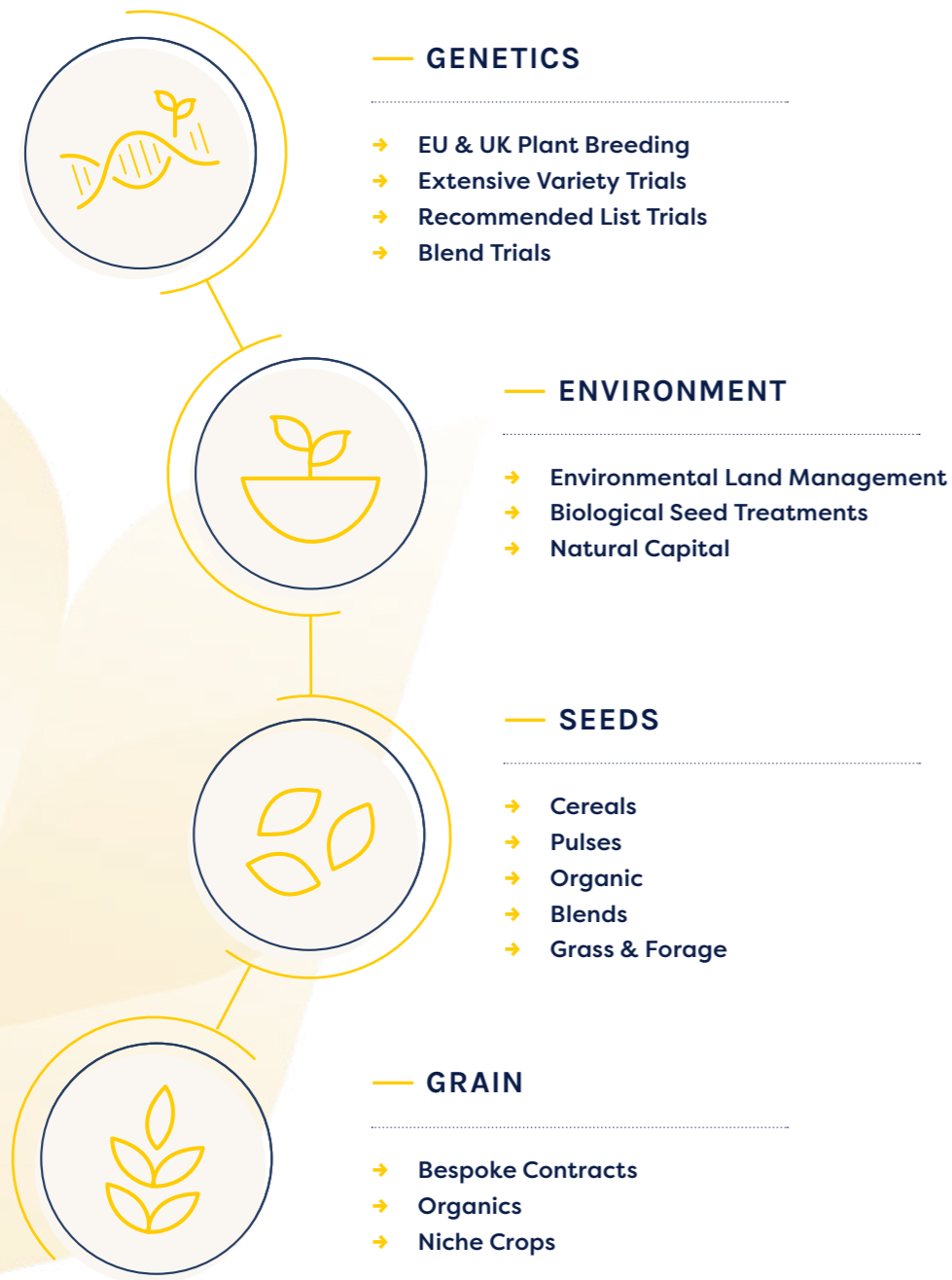
Sowing for Legacy

Genetics * Seed * Grain



Our Rotation

Research and Technical Support



Rotations are the foundation of a healthy, diverse farming system.
At Cope we aim to support every aspect of your rotation by aligning it with our services.

Contents

About Cope	4 - 5
Cereals & Pulses	6 - 39
Arable Silage Mixtures	40 - 41
Grass	42 - 47
Environmental	48 - 63
Catch Crops	64
Cover Crops	65 - 69
Soil Capital	70
ADOPT	71
Harvest 2024 Grain Markets and Added Value Grain Contracts	72 - 73

About Cope Seeds

Cope is a fully independent, family-owned seed and grain company with a strong reputation in the production, sales, and distribution of organic seed. In recent years, we've also built a well-established and growing customer base for added value conventional seed & grain.

We work closely with some of Europe's leading seed breeders to introduce high-performing varieties of wheat, barley, oats, rye, and peas to the UK market—many of which are, or are set to be, featured on the AHDB Recommended List. Alongside these mainline crops, Cope is actively involved in a range of niche markets, including naked oats, spelt and linseed.

Grass and forage crops are becoming an increasingly important part of our offering.

We provide tailored advice on grass and forage seed requirements, including cover crops and options aligned with all UK government schemes.

Our grain department has established strong relationships with many of the UK's major feed and flour mills. As a result, we're able to offer a range of buy-back contracts for cereals and pulses—giving farmers access to both high quality seed but also a secure outlet for their produce.

Cope Seed Team



Gemma Clarke
Managing Director
gemma@copeseeds.co.uk



Tom Desborough
Grain Director
tom.desborough@copeseeds.co.uk



Simon Travers
Seed Manager
simon@copeseeds.co.uk



Harry Dean-Allen
Farm Trader
harry@copeseeds.co.uk



Tom Siswick
Seed Production Manager
tom.siswick@copeseeds.co.uk



Sam May
Farm Trader
sam@copeseeds.co.uk



George Mallender
Grass & Small Seeds Specialist
george@copeseeds.co.uk



Kat Diggins
Office Manager
kat@copeseeds.co.uk

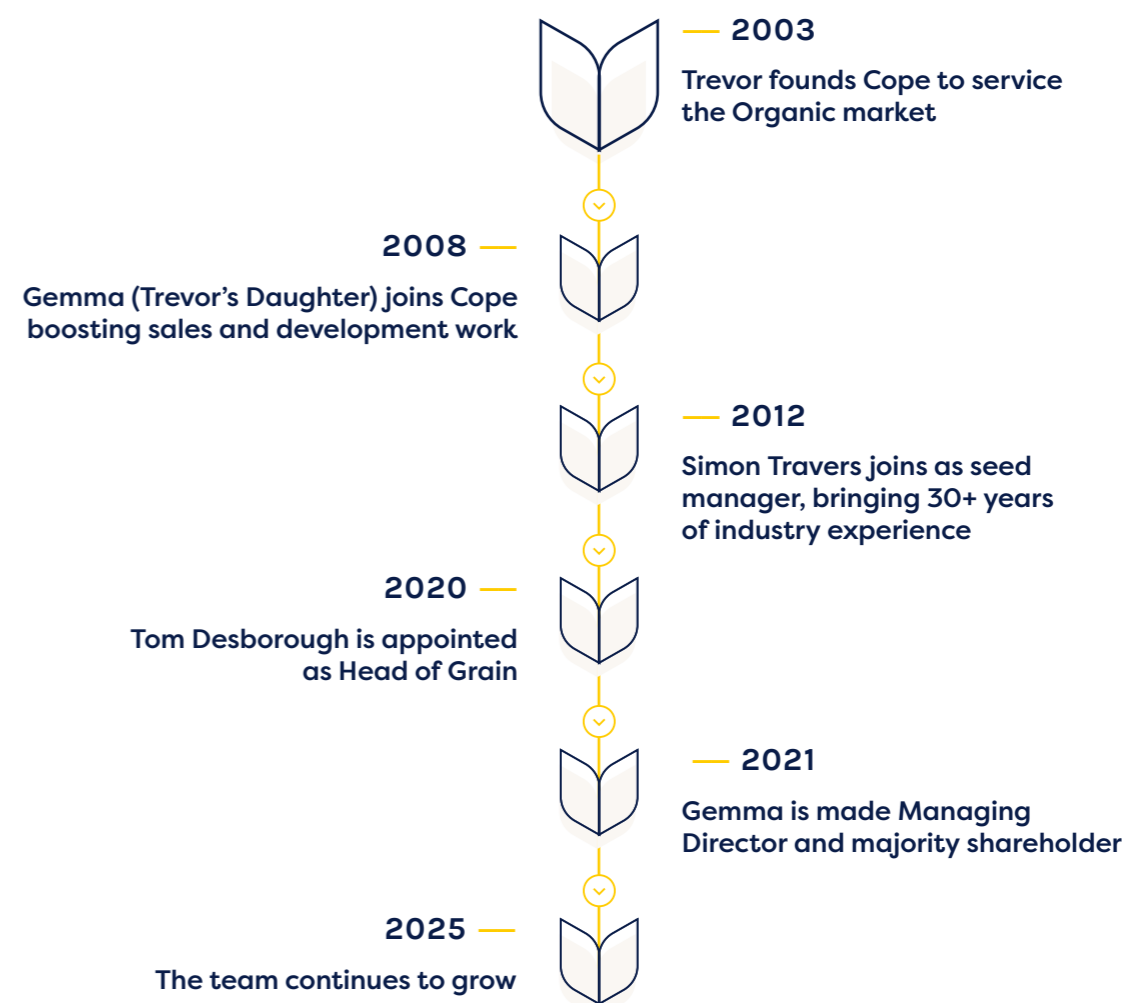


Dominic Amos
Research Agronomist & Natural Capital Specialist
dominic@copeseeds.co.uk



Francesca Richards
Grain Admin & Event Organiser
Francesca@copeseeds.co.uk

History of Cope Seeds



Nelson (E Quality)



— ABOUT

Demand is growing in the UK for German E winter wheats. Varieties renowned for their high gluten content, strong disease resistance, and exceptional grain quality. These wheats are proving to be an excellent choice for growers, whether for milling or feed purposes.

Our standout variety, bred by a leading German plant breeder, has demonstrated outstanding breadmaking quality and has been awarded the prestigious “E” Quality classification, the highest milling quality rating attainable.



— INFORMATION

- High untreated yield potential
- Suited to a wide range of soil types
- Strong disease resistance to Septoria, mildew, yellow rust, and brown rust
- Favoured by millers – achieves high protein levels with lower nitrogen inputs
- Premium opportunity – can command prices above standard Group 1 premiums due to excellent protein content and Hagberg Falling Number
- Tall and stiff straw – *height aids competition against blackgrass*
- Wide drilling window – *sow from late September through to the end of February*
- Early maturing – *ideal for spreading harvest workload*
- Premium Buy-Back Contract Available – *see page 73 for details*



“This is our second season growing Nelson. We chose it to take over from Edgar, another German E wheat, which we’d grown for more than 10 years. Nelson’s disease resistance has been a real benefit, helping us cut back on input costs and giving us more flexibility with spray timings.

Despite two challenging growing seasons, Nelson has stood its ground against other varieties on the Recommended List.

I’d recommend Nelson to any farmer looking to grow a quality, added-value wheat with the security of a, closed-loop buyback.”

Ian - I & S Clarke

		UNTREATED	TREATED	UNTREATED	TREATED	UNTREATED	TREATED	TREATED	TREATED	
	Maturity	Crop Height	Crop Height	Yield %	Yield (T/Ha)	Weight (kg/HI)	Specific Weight (kg/HI)	Protein (%)	Hagberg (s)	N Offtake
Skyfall	6	80	74	115	8.67	70	80.7	13.8	365	217
Crusoe	6	80	73	70.3	9.18	65	81	13.7	348	212
Nelson	8	93	88	117.8	8.42	76.5	83.5	14.2	378	201

*AGRII Harvest 2018

SY CHEER

Quality wheat made simple



Syngenta UK Ltd. Registered in England No. 849037.
 Jealott's Hill International Research Centre, Bracknell, Berkshire, RG42 6EY
 Website: www.syngenta.co.uk. For technical enquiries, call 01223 883400
 or visit syngenta.co.uk/contact-us to contact your local Area Manager.

KWS Vibe (Group 1)

— ABOUT

Get with the Vibe! KWS Vibe is an exciting addition to the Recommended List 2025/26 for Winter Wheats. And for good reason, it is a high quality breadmaking wheat that has one of the best combinations of yield, disease resistance and grain quality, offering real change and excellent gross margin potential for professional milling wheat growers in all regions of the UK.

— INFORMATION

- New high quality breadmaking wheat
- Very high untreated yields thanks to all-round excellent disease resistance, including 6.6 for Septoria
- Short and stiff strawed



SY Cheer (Group 1)

— ABOUT

SY CHEER is on the recommend list as a group 1 variety which looks set to be a game-changer for the UK milling market. It brings high and stable treated yield in combination with a step change in untreated yields. SY CHEER has excellent grain quality, in particular robust Hagberg Falling Number and high specific weight. Final UK FM Classification given in spring 2024.

— INFORMATION

- Excellent grain quality
- Competitive and stable yields across seasons and regions
- Excellent disease resistance
- High untreated yields



Edelman (Group 1 or E Quality)

— ABOUT

Edelmann is bred by expert Austrian plant breeder Edelhoff, the breeder of Evelina, Ehogold, Elego and Elias. Delivering quality and yield, it has tall straw and good disease resistance. We have buy-back contracts available for the variety which offers an attractive premium over feed wheats.

— INFORMATION

- Low input
- Competitive against key weeds
- High bread quality



KWS Arnie (Group 2)

— ABOUT

A UKFM Group 2, KWS Arnie elevates the yield potential of this market sector offering UK yields 3.9% above those of KWS Extase, with exceptional performances in the main wheat growing regions for the AHDB east (106%) and west (108%).

— INFORMATION

- Low input
- Competitive against key weeds
- High bread quality



The field good wheat.



KWS VIBE

Group 1 Winter Wheat

- New high quality breadmaking wheat
- Very high untreated yields thanks to all-round excellent disease resistance, including 6.6 for *Septoria*
- Short and stiff strawed



KWS UK LTD

56 Church Street
Thriplow
Royston
SG8 7RE

01763 207300
@kwsukitd
ukmarketing@kws.com
www.kws-uk.com

SEEDING
THE FUTURE
SINCE 1856



KWS Equipe (Group 2)

— ABOUT

KWS Equipe – with all the great attributes growers love about Extase but with better grain, higher yields, improved untreated yield.

— INFORMATION

- A KWS Extase plant type but even more untreated yield
- Fantastic individual disease scores
- UKFM Group 2 with export opportunities



KWS Extase (Group 2)

— ABOUT

KWS Extase is an established group 2 bread making variety with an excellent combination of high yields, quality potential and disease resistance. With a Hagberg and specific weight of 287 and 79.2 respectively, combined with a yellow rust rating of 9 and brown rust rating of 7 plus an 8.1 rating for Septoria tritici.

— INFORMATION

- High untreated yield
- The most complete package of disease resistance and grain quality on the market today
- Exceptional resistance to Septoria tritici – was the first variety over an 8 on the market



KWS Palladium (Group 2)

— ABOUT

KWS Palladium is a super clean variety with one of the highest untreated yields on the market today, thanks to its scores for Septoria (7.2), mildew (7), yellow rust (9) and eyespot (6). Importantly, its Septoria resistance has a different genetic basis to that of other commercialised Group 2 varieties. This early to mature variety (-1) is short and stiff with great resistance to sprouting, giving growers security at harvest. In addition, KWS Palladium has good yield potential across all the regions

and performs well in both the first (100%) and second wheat (100%) slots.

— INFORMATION

- Excellent disease resistance including 7.2 for Septoria tritici
- Very high untreated yield
- Short and stiff with early maturity



Diamond

— ABOUT

Is a new early ripening, bread-making variety with excellent untreated yields and baking qualities based on RL trial data from harvest 2024. It combines a rare combination of Pch1 eyespot resistance and Sm1 for orange blossom midge resistance, making it a top choice for growers.

— INFORMATION

- Pch1 eyespot resistance and Sm1 for orange blossom midge resistance
- Some of the highest combined disease scores seen to date in a bread maker
- Aggressive Growth Habit especially in the spring



DIAMOND

High Quality Milling Wheat

- Ultra-clean, early ripening, high quality milling wheat variety with excellent untreated yields and baking qualities.
- A rare combination of Pch1 eyespot resistance and Sm1 for Orange Wheat Blossom Midge resistance, making it a top choice for growers.
- Good grain quality with a very stable Hagberg Falling number and excellent protein content.



Innovation for your growth

dsv-uk.co.uk

Mayflower (Group 2)

— ABOUT

Mayflower Winter Wheat is a group 2 variety with a high untreated yield and exceptional Septoria Tritici resistance score of 8.9, the highest on the list. For those growers looking for a low input variety, should certainly look at Mayflower as either a group 2 or feed option due to its prostrate growth habit.

— INFORMATION

- Good specific weight
- Low input
- Wide drilling window
- Higher protein content



Bamford (Group 3)

— ABOUT

One of the top yielding Group 3's that has produced quality soft flour. Suitable for both export opportunities and British Mills. With stiff straw, robust disease profile and good lodging resistance. Bamford has proven itself as a low Nitrogen use variety.

— INFORMATION

- High treated yield on RL
- Suitable for biscuit making
- Good nitrogen efficiency
- Good disease resistance for all key diseases



LG Astronomer (Group 3)

— ABOUT

LG Astronomer winter wheat provides growers with an exceptional all-round agronomic package. It is a stiff strawed variety with excellent rust resistance and has a high Specific Weight of 78.2kg/hl. This variety has good agronomic attributes and performance for the earlier drilling slot.

— INFORMATION

- Excellent disease profile
- OWBM resistant



KWS Scope (Group 4)

— ABOUT

KWS Scope brings new genetics to UK growers; the cross has German-bred wheat Informer as one of its parents. Informer was a very successful European wheat which was tall but clean and had bread-making potential. KWS Scope is a shorter, earlier Graham type wheat that is in trial in the UK and across Germany and Scandinavia.

— INFORMATION

- Highest yielding variety on the Recommended List
- Hard Group 4 feed wheat with new genetics for UK growers
- Ideal wheat for growers who like short and stiff types like Graham



TOP BAMFORD '25.

Bamford is the most impressive Group 3.

The top choice for growers, being the most widely grown Group 3 variety across the UK.

Bamford offers an enviable agronomic and disease resistance package, and with excellent yield scores of 106% treated and 90% untreated it is one of the top soft wheats on this year's Recommended List.

Bamford continues to offer unbeatable end-market flexibility as it delivers to feed, distilling, UK export and biscuit milling quality, making it the ideal choice in volatile market conditions.

Bamford is the dependable wheat you can trust to deliver the best gross output potential.

Bamford. Your unrivalled top choice for 2025.

BAMFORD
Winter Wheat

Speak to your seed merchant today about availability.

Elsoms
The Seed Specialists
elsoms.com

LG Beowulf (Group 4)

— ABOUT

LG Beowulf is one of the highest yielding varieties on the Recommended List 24/25 with a great agronomic package. With high consistent yields across UK, and a strong disease package.

This variety has very stiff straw and a high specific weight, plus Orange Wheat Blossom Midge (OWBM) resistance.

— INFORMATION

- High yielding group 4 variety
- Good disease resistance
- OWBM resistant



Champion (Group 4)

— ABOUT

A hard feed wheat with high yields (106%) and specific weight of 74.8 kg/hl. The variety is tall at 90 cm and has good disease resistance. Suitable for all soils and it is a good option for a second wheat. Good ratings for Mildew (6.5), Yellow Rust (9), Brown Rust (4.8) and Septoria tritici (7.3). Resistant to Orange Wheat Blossom Midge and earlier maturity (0).

— INFORMATION

- High yielding group 4 variety
- Untreated yield high at 86%
- Wide range of soil types
- OWBM resistant



KWS Dawsum (Group 4)

— ABOUT

Awesome Dawsum, the excellent barn-filling choice with outstanding grain quality including one of the highest specific weights on the market today. New in 2022 from KWS is a hard Group 4 wheat that offers growers the ultimate flexibility on-farm, delivering fantastic yields right across the rotation if you are drilling early (105%), mainstream (103%) or late sown slots (103%). Combine these benefits with the excellent disease package, the variety delivers an untreated yield (89%) second only to KWS Extase and includes 6.3 for Septoria and 9 for yellow rust. Add in the exceptionally marketable.

— INFORMATION

- Exceptional specific weight (79.9kg/hl)
- Very high yield potential across all regions of the UK
- Super flexible on-farm with a wide sowing window



“ We chose LG Beowulf for its consistent high yield & good disease package. The grain quality is an added bonus, giving potential access to more markets. ”

Dan,
Lincolnshire



YIELD EVERY OPPORTUNITY, SEASON, REGION & SCENARIO



LG BEOWULF WINTER WHEAT

- High yielding, consistent Group 4 hard wheat
- Outstanding disease resistance with OWBM
- High specific weight



lgseeds.co.uk/lg-beowulf

Wheat Blends (Organic)

Mixtures of cereal varieties are a great way to build resilience and improve crop buffering capacity. By selecting complementary varieties, we can reduce competition and increase compensation within the crop for better overall performance.

At Cope, we run our own trials testing varietal blends to understand how best to turn theory into practice. In the past, we have marketed successful milling blends like Summit and Apex, and we are now working on new combinations.

While traditional varietal mixing focuses on disease resistance and avoiding overlapping ancestry, we believe other traits, like height, growth habit, and growth cycle, can be just as important. Blends are proven to improve yield and quality stability over time, but the key is

designing them with complementary traits.

Simply mixing a few varieties together is not enough. Not all diversity is beneficial, and careful design is essential to achieve the best results.

This season, we are researching wheat, oat, and bean blends to offer you the best advice and seed options. We also work with Wildfarmed to design milling wheat blends that suit their regenerative growing standards. Keep in mind that some mills still prefer varietal purity for processing, so it is important to consider the end market.

Summit (Organic Milling Soft Wheat Blend)

— ABOUT

This season, we are offering a 2 way soft wheat blend with a milling buy back. The blend will be a later maturing crop with high yield potential and tall straw, perfect for weed suppression. The varieties within the blend are proven organically and together offer some protection against Orange Wheat Blossom Midge.

— INFORMATION

- High yield potential
- Tall straw
- Strong at weed suppression



Apex (Organic Dual Purpose Wheat Blend)

— ABOUT

Apex combines two of the best wheat varieties for untreated yield potential, Septoria tritici resistance & early maturity. Not only is Apex strong agronomically, the grain quality of this blend is superb with high specific weights, high habergs and potentially high levels of protein suitable for milling. This blend is suitable both for feed and could potentially make milling specification.

— INFORMATION

- Early maturing
- Strong untreated yields
- Strong specific weight and Hagberg



Wheat Blends (Conventional)

Tristar (Conventional Feed Wheat Blend)

— ABOUT

Our Tristar blend has been specifically blended to include 3 varieties from 3 different breeding stables. This variation in genetics will help the blend fulfil its purpose in protecting the other lines, should ones resistance start to falter.

Tristar is an exciting blend of 3 varieties that will offer early maturity and high untreated yield potential. Tristar's high untreated yield potential comes from strong disease resistances between the 3 varieties including the highest resistances to Septoria Tritici.

The quality of the grain is also of the highest merit, with Tristar having the ability to produce a bold sample.

— INFORMATION

- High grain quality
- Strong Septoria resistance
- High untreated yield



Triple X (Conventional Soft Wheat Blend)

— ABOUT

Our Triple X blend is made from a range of soft wheat varieties that offer early to medium maturity, with strong resistance to rust and high grain quality.

This blend has been created to ensure it meets soft wheat market requirements whilst offering the blend benefits of reduced disease and high untreated yield potential.

— INFORMATION

- Medium earliness
- Strong rust resistance
- High untreated yields



Spring Wheats

THE HEAVY WEIGHT YIELD LEADER

Everlong



— ABOUT

Everlong is our spring wheat added to the recommended list in 2024. It is the perfect choice for growers looking for a late autumn drilled wheat or a true spring wheat, looking to supply the feed market.

Everlong is clean and easy to manage and capable of producing the boldest grain of any spring wheat. It is also the highest yielding spring wheat of any other on the recommended list.



— INFORMATION

- High yielding variety on the recommend list
- HIGHEST specific weight of any variety on the recommend List
- Perfect for late Autumn drilling as well as Spring
- Strong disease profile
- Early to mature



Turn up the volume

The number one choice for high yields and big bold grains.
The highest yield and specific weight of any spring wheat on the Recommended List.
Everlong offers the full package for farmers looking to crank it up a notch this spring.



“This was our first season growing Everlong, and it came about more out of necessity than choice. Going into 2024, we had no viable winter wheat options remaining and were keen to avoid filling the shed with low-value barley. We also grew a spring hard red wheat and a quality spring wheat called Ladum. Despite Everlong being drilled right at the end of April, later than the others, it still matched them in terms of yield, which was a very welcome result.

One of the most impressive things about Everlong has been its disease resistance, which is noticeably better than other similar varieties. It also delivers naturally high bushel weights, which adds to its reliability. This is a variety that would suit any grower looking for a dependable, stress-free option with a highly flexible drilling window. Given the weather challenges we all face these days, that kind of flexibility is incredibly valuable. In a more typical season, I would like to try drilling Everlong in December, January or February as part of a blackgrass management strategy, just to see how far the variety can be pushed.”

Colin Chappell – Lincolnshire

	Mildew	Yellow Rust	Brown Rust	Septoria Tritici
KWS Fixum	8	6	7	6
KWS Alicium	8	7	6	6
KWS Cochise	8	4	7	6
Everlong	8	7	7	6

Mulika (Group 1)

— ABOUT

Mulika remains an established & reliable Group 1 spring wheat. It was the first Group 1 wheat with resistance to orange wheat blossom midge.

It combines a high yield potential, with moderate length straw, good disease resistance and superb grain quality. These attributes ensure that Mulika is the perfect spring crop option to achieve excellent gross margins.

It combines excellent grain quality characteristics, with a very high Hagberg and specific weight and

a very good protein content. It performs consistently well in baking tests giving the potential for excellent market premiums.



— INFORMATION

- Excellent grain quality
- High hagberg and specific weight
- Good disease package

KWS Harsum (Group 1)

— ABOUT

Confirmed as a Group 1 wheat by the UK Flour Millers in December 2022, KWS Harsum produces similar grain to established variety Mulika, but with the added benefit of good gluten quality and baking performance, consistent across a range of challenging seasons.

— INFORMATION

- Joint-highest yielding Group 1 on the 2025/26 RL
- Group 1 quality fully approved by the UK Flour Millers
- OWBM resistance



SCAN ME

AHDB
RECOMMENDED

MULIKA

SPRING WHEAT

Flexibility. Performance. Quality.

Tel 01223 890777
Email info@senova.uk.com
@SenovaLtd
www.senova.uk.com

Late autumn or spring sown, **Mulika** continues to offer premium quality, resistance to orange wheat blossom midge and excellent all-round disease resistance.



KWS Ladum (Group 1)

— ABOUT

KWS Ladum is a spring variety that brings top milling and baking quality with highly productive yield levels, a massive 6% ahead of the market leader Mulika when spring-sown.

— INFORMATION

- Taking top-quality spring breadmaking yields to the next level
- UK yield 6% ahead of Mulika
- Excellent disease package including a [7] for yellow rust



Nissaba (Group 1)

— ABOUT

Nissaba is a quality wheat that offers high hagberg and good protein and has given treated yields from spring sowings that are similar to the current Group 1 control Mulika. It's a relatively late maturing variety and data shows that Nissaba has high resistance to brown rust, combined with resistance to OWBM.

— INFORMATION

- High hagberg
- Brown rust resistance
- Late maturing



Winter Barley

Craft (Feed and Malting)

— ABOUT

Craft is a very high-yielding winter malting barley which received Full MBC Approval for Brewing in May 2018. It brings improved agronomics and outstanding grain quality and is in strong demand from end users.

— INFORMATION

- Suitable for all soil types
- Robust disease profile with good straw
- Consistent yields across seasons and regions



Electrum (Feed and Malting)

— ABOUT

A real step forward, Electrum winter barley was added to the AHDB Recommended List in 2015 and now has approval for malting. Superb grain quality with low screenings and high specific weight. Performs better on heavier soils when compared to Craft. Extremely early to mature.

— INFORMATION

- Malting type & approved by Maltsters
- High yielding
- Early to mature
- Good Specific weight



KWS Valencis

— ABOUT

Given its parentage from the highly reliable KWS Tardis. Very high yields are on offer across the UK, whilst retaining the 2-row advantage of grain that is bold and bright with very good specific weight.

— INFORMATION

- Early maturing with big bold grain
- Very stiff straw with good resistance to lodging and brackling
- Excellent yield consistency over different trialling years



LG Caravelle (Feed)

— ABOUT

LG Caravelle is the highest yielding 2-row winter barley on the AHDB Recommended List 24/25. The variety has very high yield potential across all regions of the UK along with high untreated yield.

LG Caravelle has a robust disease resistance package and a UK yield comparable with hybrid varieties.

LG Caravelle has a very high specific weight and good screenings. Limagrain UK's studies suggest that it has the benefit of early maturity.

— INFORMATION

- Highest yielding across the UK
- A robust disease package gives Caravelle an excellent untreated yield offering some rest bite in challenging spring conditions
- Caravelle will sell out early this autumn, with seed limited



Spring Barley

PLENTY OF STRAW,
EARLY TO HARVEST, NO FUSS!

Evelina (Feed)

— ABOUT

Evelina is a tall variety, has very good resistance to brackling along with an excellent tolerance to the main diseases. The growth rate and establishment of Evelina is quicker than other varieties, making it especially competitive to any weed contamination and suitable for late spring sowing should conditions dictate. Perfect for livestock areas.

Evelina is the tallest spring barley within our portfolio and most probably the tallest barley

commercially available and is more akin to the popular varieties from the past such as Hart and Dandy.

— INFORMATION

- High yielding staw
- Low input
- Great feed option



“

Overall it's an easy to grow and a tidy feed variety to go into ration mixes. It combines well and produces a good-looking grain with a decent specific weight as well as a good straw crop.

Richard Monk



Laureate (Feed and Malting)

— ABOUT

Laureate spring barley is a quality malting type suitable for both brewing and distilling. It's a shorter, later-maturing variety and the highest yielding variety suitable for both markets, with untreated yields of 89% and good resistance scores to all the major diseases.

— INFORMATION

- Most popular malting variety
- Highest untreated yields of any malting approved variety
- Popular amongst conventional and organic growers



Firecracker

— ABOUT

Firecracker offers high treated yields with an unrivalled performance in untreated yield testing which gives growers confidence in high disease infection years. With excellent specific weight, low skinning and very high extract combined with high predicted spirit yield, Firecracker is under test for both brewing and distilling.

— INFORMATION

- High treated yields
- Excellent specific weight
- Fantastic disease resistance



Westminster (Feed and Malting)

— ABOUT

A long-standing favourite in the organic sector with long, stiff straw and excellent all-round disease resistance, combined with very high specific weight. Accepted by some end users as a malting barley, and a good excellent choice as a feed barley also. Malting Buy Backs available.

— INFORMATION

- High specific weight with low screenings
- Suited for live stock
- Tall & stiff straw



Skyway (Feed and Malting)

— ABOUT

Skyway is one of the highest yielding varieties on the recommended list. It has provisional MBC approval. It has a good disease package, which includes a 9 for Mildew. It is medium in height, has a high brackling resistance and is medium to early maturity.

— INFORMATION

- Approved for malting
- High specific weight
- Early to medium maturity



Spring Oats

SOARS ABOVE THE REST

Merlin



— ABOUT

Merlin delivers an unrivalled combination of yield, agronomic features, and disease resistance. Merlin Spring Oat is suited to all regions in the UK and produces high quality oats when grown either organically or conventionally.

Merlin spring oat was added to the Recommended List (RL) in 2021. As well as performing well in the field, it's becoming increasingly attractive to millers. Notably, it's a step above the rest of the market leaders because it can be grown throughout the UK, even in the wetter areas, due to its early ripening.

Merlin Success

Robert Golland farms 161 hectares of organic crops on the 1000-hectare Vine House Farm in South Spalding, Lincolnshire. The organic rotation includes winter wheat, spring barley and now oats. In 2023 he grew 60 hectares of Merlin Spring Oats for the first time. It

was grown in part for seed and in part for Milling. They achieved an earth-shattering yield of around 7t/Ha with strong bushel weights.



— INFORMATION

- Accepted by all UK millers
- High treated and untreated yield
- The lowest screenings – a major benefit to the mills and to some mills, more important than kernel content
- The highest resistance to lodging
- Earliest to mature
- Premium Flexi-Oat contract available - please see page 73



"2024 was my first experience growing Merlin, with favourable growing conditions and a carefully considered nutrient plan, we went on to win the YEN award for the highest yielding oat crop, with an average yield of 11.43T/ha and a potential yield of 18.3T. I would highly recommend Merlin to anyone wanting to incorporate spring oats into their rotation."

Mark Popplewell



	Treated Yield (%)	Untreated (%)	Lodging Resistance	Crown Rust (1-9)	Mildew (1-9)
Isabel	100	86	7	5	5
Canyon	100	93	8	4	8
Merlin	101	94	8	4	8

*AHDB Recommend List 2025/26

Caledon

— ABOUT

As the highest-yielding variety on the AHDB Recommended List, its treated yield of 105% and untreated yield of 98% set it apart. Its agronomic reliability is bolstered by the highest powdery mildew score (8) on the RL and a strong crown rust score of 5.0, second only to Asterion. These features ensure Caledon performs consistently in the field while minimising disease risks for growers.

— INFORMATION

- Highest yielding on the AHDB RL
- Strong disease profile
- Robust straw lodging score of (7)



Winter Oats

Mascani

— ABOUT

Mascani is the most widely grown winter oat in the UK and is well established as the favourite of the millers and on farm. It is a stiff strawed variety with excellent resistance to mildew and good resistance to crown rust.

With its exceptionally high kernel content, excellent specific weight, large grains, and low screening losses, Mascani remains the leading top quality milling variety.

— INFORMATION

- Suitable for the milling market
- Most popular choice of winter oat for millers
- Premium Flexi-Oat contract available - please see page 73



Winter Rye

ONE RYE, TWO JOBS, ZERO COMPROMISE

Elego

— ABOUT

Dual-purpose population winter rye bred by Edelhoff, one of Austria's most respected rye breeders. Now in its seventh year of commercial use in the UK, Elego is rapidly gaining popularity with both growers and millers.

“

Elego is doing a great job this season of smothering out weeds. Again, we grazed the crop quite hard with sheep and it bounced back well. Again, this rye went to both a local miller and a local dairy farmer who is still seeing the benefits of feeding rye.

Mike Stringer, arable farmer, Yorkshire

— KEY AGRONOMIC BENEFITS

- High untreated grain yield potential
- Excellent disease resistance profile
- Early to medium maturity – ideal for UK conditions
- Tolerant of poor harvest weather
- Stable Hagberg Falling Number – suited to milling markets
- Exceptional drought tolerance – deep roots scavenge water and nutrients effectively
- Performs particularly well on light, drought-prone land



Humbolt

— ABOUT

Humbolt Forage Rye is a forage variety producing excellent early spring growth. It can be used for an early turnout for cows or an early graze for sheep.

— INFORMATION

- Winter hardy
- Good early spring growth
- Graze in situ



KWS Tayo

— ABOUT

KWS Tayo is an excellent option for pig finishing or sow rations. With high grain and straw yields plus low growing costs. Food industry uses include flour, breakfast cereals and distilling or malt. KWS Tayo offers robust stem stiffness compared to older hybrids.

— INFORMATION

- New generation PollenPlus hybrid with excellent stem stiffness
- Multi-purpose hybrid (AD or grain; feed, flour and distilling)
- No.1 harvest index (grains/ear) to drive grain yield



SU Performer

— ABOUT

A mainstay variety in the Elsoms' portfolio, SU Performer is high yielding and has a good resistance to lodging. SU Performer is a silage, baking and feed variety, which has good disease resistance to brown rust and mildew. Performs well on poorer soils.

— INFORMATION

- New turbohybrid with very high yield in 4 European countries
- Good lodging resistance, best leaf health
- High Hagberg falling number and low enzyme activity



Spring Rye

Bojko

— ABOUT

Bojko is an outstanding population variety of Spring Rye with high yield potential. It is a low input variety so highly suited to both conventional and organic farms.

Bojko is equally at home being grown for forage, as a cover crop, for AD use or for grain production.

— INFORMATION

- Medium in height
- Early to mature
- Great disease package

— GRAIN QUALITY

- Average hagberg: 255 260
- Average DM protein: 13.5 14.5



Winter Triticale

Lumaco

— ABOUT

Lumaco is the highest yielding triticale variety on the AHDB DL. It combines this superb performance with taller but stiff straw, early ripening and a very high specific weight. Lumaco has a 9 rating for yellow rust resistance and will be the market leader going forward.

— INFORMATION

- Tall, stiff straw
- Early to ripen
- Excellent specific weight



Kasyno

— ABOUT

Kasyno is an established high yielding variety. It features a short straw, fantastic yellow rust scores, early maturing, and a high specific weight. This makes Kasyno suitable for a wide range of soil types.

— INFORMATION

- Short & stiff
- Great against yellow rust
- Early to mature



KWS Fido

— ABOUT

Fido is one of the UK's leading triticale varieties, producing high yields, in both straw and grain. This is due to its height but it remains up right as the straw is stiff. Grain quality is good with specific weight really standing out (73.1kg/hl).

— INFORMATION

- Good specific weight
- Strong straw
- High yields



Spring Triticale

Frigus

VARIETY	HEIGHT (CM)	YIELD 2024 (%)	YIELD 2023 (%)	SPECIFIC WEIGHT (KG/H)
Frigus	68	113.5	113.3	69.3
Dublet	67	104.7	103.7	71
Hugo	69	99	94.1	69.5

*Agrii treated trials (Essex) 2023

— ABOUT

Higher yielding than most spring triticales, with a strong performance on most diseases. A variety with good straw yields grown for both feed and milling markets.

— INFORMATION

- Strong yields
- Medium height
- Good disease package



“

Spring Triticale gives you the best of both worlds – the yield and grain quality of wheat with the resilience of rye. It's a tough, versatile crop that thrives where others struggle, whether you're after forage, grain, or a dependable cover. Its deep roots make it ideal for drought-prone ground, pulling up nutrients and moisture when it matters most.

Simon Travers

Winter Beans

Vespa

— ABOUT

It has short straw with good standing ability and a larger seed size than Tundra. With its large seed and pale hilum. Vespa has excellent potential for the export market as well as feed.

— INFORMATION

- Highest yielding variety
- Large seed size and pale hilum
- Short stiff straw



Vincent

— ABOUT

Vincent is a new winter bean producing very high yields. A later maturing pale hilum variety, Vincent has taller but stiff straw and good standing ability at harvest. Its outstanding features are its very high yield and exceptional seed size and high protein content. Vincent should prove very popular for both feed and export markets.

— INFORMATION

- Very high yields
- Exceptional seed size
- Very good standing ability





Creating a real buzz!

With the highest yields on the PGRO Descriptive List, excellent standing ability and large grain, market leader **Vespa** is the perfect choice for your rotation and the feed and export markets.

Other Senova varieties:






Vincent brings high yields, exceptionally large grain, a high protein content and excellent downy mildew resistance. It should be a popular choice.

Winter beans – the perfect fit
Yield benefit for the following wheat crop
Low growing cost
Good break crop gross margin
Opportunity to control grass weeds
Ready markets for feed and export use



Tel 01223 890777 • info@senova.uk.com • @SenovaLtd • www.senova.uk.com

Spring Beans

Lynx

— ABOUT

A top yielding variety, Lynx also offers the best downy mildew resistance available and is one of the stiffest strawed varieties in the marketplace, a combination that is not currently matched by other varieties, in the UK. A preferred variety across Europe.

— INFORMATION

- Consistent performance across seasons of changeable weather
- High yielding



Victus (Spring)

— ABOUT

Victus is a low vicine/low convicine variety which has comparable yields to leading varieties of spring beans with the added potential for premiums on buy back contracts with specialist animal feed producers. It is a short to medium strawed variety with good protein content and excellent resistance to mildew.



Futura (Spring)

— ABOUT

New to the market, Futura, like Victus is a low vicine/low convicine variety, which is taller and slightly higher yielding than Victus. Although taller, it has excellent standing ability with good disease resistance.



VARIETY	LVC	YIELD	MATURITY	STRAW LENGTH	STANDING	DOWNY MILDEW	RUST	TSW	PROTEIN CONTENT (% DRY)
Futura	LVC	104	7	106	8	4	4	549	27.1
Victus	LVC	102	7	100	7	5	4	551	27.8
Lynx	No	106	6	100	8	6	4	515	27.5

*PGRO Recommended List 2025



THE FUTURE OF BEANS



FUTURA SPRING BEAN

SCAN HERE FOR INFO



npz-uk.com

NPZ UK - Breeding Quality

Spring Peas



White Feed Peas

VARIETY	YIELD	MATURITY	STRAW LENGTH	STANDING	DOWNY MILDEW	POWDERY MILDEW	TSW	PROTEIN CONTENT (% DRY)
Concerto	118	6	75	7	7	[S]	365	21.5
Bastist	116	6	83	7	6	[S]	317	21.7
Kameleon	112	6	73	7	5	[S]	319	21.8
Marler	116	6	84	6	6	[HR]	305	21.7

*PGRO Recommended List 2025

Marler

RELIABLE & ALWAYS ON THE BALL



— ABOUT

Marler is a new white/yellow pea added to the 2025 PGRO Recommended List & offers growers a step up in yield & quality.



— INFORMATION

- High Yields – Consistently
- End Market Approval
- Early Maturity
- Excellent Disease Profile



	UK TREATED YIELD (%)	EARLINESS
Marler	116	6
Kameleon	112	6
Manager	106	6

*PGRO Recommended List 2025

Concerto

— ABOUT

Concerto was new to the PGRO Descriptive List of Combining Peas for 2024. It brings a massive yield advantage back to Yellow peas with a very good standing power at harvest and offers a good option to growers looking to get peas into their rotation.

— INFORMATION

- Very high seed yields on the PGRO DL
- Earliness of maturity
- High resistance to downy mildew



Green Peas

VARIETY	YIELD	MATURITY	STRAW LENGTH	STANDING	DOWNY MILDEW	POWDERY MILDEW	TSW	PROTEIN CONTENT (% DRY)
Carrington	107	6	81	7	8	[S]	260	21.5
Kactus	100	5	74	7	7	[S]	305	22.3
LG Aviator	99	5	73	7	7	[HR]	299	22.1

*PGRO Recommended List 2025

Carrington

— ABOUT

Carrington is the highest yielding green pea variety on the current PGRO descriptive list. It is a tall medium variety with good resistance to lodging and a good disease profile especially against Downy Mildew.



Kactus

— ABOUT

Kactus is a medium height variety with good yields, disease resistance and a high protein content.



LG Aviator

— ABOUT

LG Aviator is a short variety with average yields but is one of the very few varieties on the PGRO list with a high resistance to Powdery Mildew.



Pink Peas

Flamingo

— ABOUT

The Flamingo spring pea is a pink pea that's early to mature, with good standing ability. Its unique pink colour remains even after cooking, which presents great human consumption market potential. We have buyback contracts available.

— INFORMATION

- A uniquely pink coloured pea
- Used for human consumption & pet feed



VARIETY	YIELD	MATURITY	STRAW LENGTH	STANDING	DOWNY MILDEW	POWDERY MILDEW	TSW	PROTEIN CONTENT (% DRY)
Flamingo	87	5	86	7	7	-	285	22.8

*PGRO Recommended List 2025





Bicropping

Bi-cropping, the practice of growing a cereal and a pulse crop together, is gaining interest across UK farms and it is easy to see why. When chosen carefully, companion crops can bring mutual benefits that go well beyond what either could achieve on their own.

One of the most successful examples is wheat grown with field beans. This combination has consistently shown strong results in trials and on farm. As well as helping to naturally suppress weeds, it can also lift the protein content in the wheat, making it especially useful for those targeting milling markets. Field beans, being a legume, fix nitrogen in the soil, which reduces the need for nitrogen fertiliser and leaves a useful residue for the following crop.

Bi-cropping is not limited to wheat and beans either. Oats and peas are another strong pairing, delivering good yields and balanced crop performance. The key is that each crop accesses water and nutrients differently and at

different soil depths, which allows them to work in harmony rather than compete. This makes the most of your land and helps the crop cope better with drought or other weather extremes.

It is worth noting that results will vary depending on the season. One crop may do better than the other in any given year, but this variability can actually add stability by spreading risk.

Whether you are looking to improve grain quality, make better use of your inputs, or build greater resilience into your rotation, bi-cropping is a practical and increasingly popular approach. If you are interested in trying a mix or would like advice on what suits your system best, please do get in touch. We would be happy to help.

Bio Stimulant Seed Treatments

With the range of chemical seed treatments being reduced year on year due to their perceived environmental impacts, the use of Bio stimulant Seed Treatments gives an alternative to help with crop establishment and development.

These generally help to accelerate initial emergence and help with root development giving the plant an improved ability to find and take up nutrients from the soil. Nuello iN and Newton are 2 Bio stimulant treatments that have shown to have performed well in both trials and commercial situations and these are available on seed that Cope Seeds can offer.



Nuello iN

NOW APPROVED FOR ORGANIC GROWERS

Nuello iN contains a blend of nitrogen fixing endophyte bacteria that are proven to capture nitrogen directly from the atmosphere. Trials have shown it to have a benefit equivalent to 30 kilos of Nitrogen per hectare. It enhances crop biomass and root development to improve nitrogen scavenging from the soil. It has shown to have good yield benefits on land with light or shallow soils and on second wheats. Nuello iN can be applied in association with other seed treatments such as Vibrance Duo and Beret Gold.



Newton

Newton has shown to accelerate germination by 2.5 days compared to untreated seed and 4-5 days over Beret Gold + Latitude. In less than ideal sowing conditions, Newton has shown to have a 17% higher emergence compared with untreated seed and 12% higher if co-applied with Beret Gold.

Average root growth for cereal plants sown with Newton have seen to be 43% higher and it has benefitted Peas with a 28% increase and a massive 64% on Beans! This enhanced root development will help increase nutrient uptake with a resultant increase in yield potential.

For further information on these Bio- stimulants, please contact us at our office on 01529 421081.

Arable Silage Mixtures

Arable silage mixtures offer a fast-growing alternative or complement to grass and maize silage. They can be cut for silage in 10–12 weeks or left until 14–16 weeks for wholecrop harvest.

At a lower seed rate, they make excellent nurse crops for undersown grass leys, but to support grass establishment, they should be harvested no later than 12 weeks after sowing.

When choosing a mixture, consider the wide variation in thousand grain weights: barley (50g),

oats (45g), peas (250g), and vetch (50g), as this will influence mixture balance and seed rate.

Cope Seeds also supplies non-organic arable silage mixtures. Please contact us for further information.

Arable Silage number 1 (70% Organic)

Probably the most widely sown arable silage mixture, this mixture is high on the barley content with the peas adding a useful protein boost to the mix. This should give a ratio by number of seeds of approx. 85% barley and 15% peas.

This mixture is available with 60% ORGANIC Barley

& 40% ORGANIC Peas for growers wanting to combine the crop for grain rather than take it for silage or wholecrop.

- 60% ORGANIC, Spring Barley ✓
- 10% ORGANIC, Spring Peas ✓
- 30% NON-ORGANIC, Spring Peas

Arable Silage number 2 (70% Organic)

The preferred option for a growing number of farmers, this mixture, with its higher pea content will produce a silage or wholecrop that is higher in protein than mixture number 1 and will also leave a useful amount of residual nitrogen for the following crop. By number of seeds, this should give a ratio of approx. 75% Barley & 25% Peas

This mixture is available as 40% ORGANIC Westminster Barley & 60% ORGANIC Peas for growers wishing to combine the crop for grain.

- 40% ORGANIC, Spring Barley ✓
- 30% ORGANIC, Spring Peas ✓
- 30% NON-ORGANIC, Spring Peas



Arable Silage number 3 (70% Organic)

A traditional mixture containing Oats as well as Barley, Oats tend to do well in less favourable conditions or areas of high rainfall. By number of seeds, this should give a ratio of approx. 41% Barley, 47% Oats & 12% Peas.

This mixture is available as 30% ORGANIC Barley,

30% ORGANIC Oats & 40% ORGANIC Peas for those growers who wish to combine it as grain.

- 30% ORGANIC, Spring Barley ✓
- 30% ORGANIC, Spring Oats ✓
- 10% ORGANIC, Spring Peas ✓
- 30% NON-ORGANIC, Spring Peas

Arable Silage number 4 (70% Organic)

A high protein, lower carbohydrate mixture which should also provide large amounts of residual nitrogen for any following crop.

The ratio by number of seeds for this mixture should be 55% Barley, 26% Peas & 19% Vetches

- 30% ORGANIC, Spring Barley ✓
- 40% ORGANIC, Spring Peas ✓
- 20% NON-ORGANIC, Spring Peas
- 10% NON-ORGANIC, Spring Vetch

Arable Silage number 5 (70% Organic)

A Wheat/Pea mixture for whole cropping or which be taken through to the grain stage. The peas will not only release nitrogen and add to the protein of the resultant crop but in trials, have also shown to have good weed suppressing qualities making for a cleaner crop when combining.

- 60% ORGANIC, Spring Wheat ✓
- 10% ORGANIC, Spring Peas ✓
- 30% NON-ORGANIC, Spring Peas

Cope seeds can also supply non-organic arable silage mixtures, please contact us for further information

Grass Seed Mixtures



At Cope, we specialise in grass seed mixes for both conventional and organic farmers. Sourced from top European breeders, our blends offer high yields, persistence, digestibility, and disease resistance. Since everything we offer is made to order, we can tailor our standard mixes to suit your specific needs, soil, and climate. If you're after something different, we're always happy to create bespoke mixtures just for you.

Reseeding grass leys is essential to maintain high yield potential. After five years, although the grass may still appear green and productive, many plants will be replaced by indigenous species like Rough Stalk Meadow Grass, Bentgrass, and Yorkshire Fog. As little as 50% of the original sown population may remain, and

by the seventh year, these indigenous grasses could make up as much as 70% of the sward, significantly reducing the ley's yield potential.

At Cope, we offer complete grass seed mixes at reduced rates, or we can create bespoke options tailored to your specific needs, ensuring a revitalised ley that delivers optimal performance.

Organic Grass Seed Mixtures

70% Organic Vetch Express

40%	ORGANIC Vetch	✓
10%	ORGANIC Tetraploid Italian Ryegrass	✓
15%	ORGANIC Diploid Italian Ryegrass	✓
5%	ORGANIC Crimson Clover	✓
20%	Tetraploid Italian Ryegrass	
20%	Red Clover	

20kg/ac

— INFORMATION

- One-year, fast-growing mixture for high forage yield
- Primarily designed for a single, large cut
- Regrowth allows for a second cut or aftermath grazing
- High legume content improves soil fertility
- Releases nitrogen back into the soil when ploughed in



70% Organic 1-2 Year

35%	ORGANIC Tetraploid Italian Ryegrass	✓
35%	ORGANIC Diploid Italian Ryegrass	✓
5%	Teanna Tetraploid Italian Ryegrass	
25%	Red Clover	

13kg/ac

— INFORMATION

- Fast-growing and acts as a natural weed suppressant
- Benefits from regular topping during the growing period
- Adds organic matter and releases nitrogen when ploughed in
- Can be cut or grazed if forage is needed



70% Organic 2-3 Year

40%	ORGANIC Hybrid Ryegrass	✓
30%	ORGANIC Tetraploid Italian Ryegrass	✓
14%	Tetraploid Perennial Ryegrass	
11%	Red Clover	
5%	Large Leaf White Clover	

13kg/ac

— INFORMATION

- Produces excellent quality silage
- Palatable and productive aftermaths
- Hybrid ryegrass boosts longevity of the ley
- Clovers enhance soluble carbohydrate and protein levels



70% Organic 3-5 Year Ley

20%	ORGANIC Late Diploid Perennial Ryegrass	✓
25%	ORGANIC Late Tetraploid Perennial Ryegrass	✓
25%	ORGANIC Intermediate Diploid Perennial Ryegrass	✓
14%	Intermediate Tetraploid Perennial Ryegrass	
6%	Large leaf White Clover	
5%	Small leaf White Clover	
5%	Red Clover	

13kg/ac

— INFORMATION

- High-quality, highly digestible forage for 3-5 years
- Built around top-performing, high-yielding varieties
- Delivers excellent results under a cut-and-graze system



70% Organic 5 Year + Ley (Dual Purpose)

25%	ORGANIC Intermediate Diploid Perennial Ryegrass	✓
25%	ORGANIC Late Tetraploid Perennial Ryegrass	✓
20%	ORGANIC Late Diploid Perennial Ryegrass	✓
14%	Intermediate Tetraploid Perennial Ryegrass	
3%	Timothy	
5%	Large Leafed White Clover	
4%	Small Leaf White Clover	
4%	Medium Leaf White Clover	

13kg/ac

— INFORMATION

- Permanent dual-purpose ley for long-term use
- Provides early, lush, and palatable spring growth
- Suited to silage, hay, haylage, set stocking, or paddock grazing
- Extremely hardy and reliable in challenging conditions
- Ideal for higher altitudes or difficult soils



70% Organic 5 Year + Cutting Ley (Dual Purpose)

20%	ORGANIC Intermediate Tetraploid Perennial Ryegrass	✓
20%	ORGANIC Late Diploid Perennial Ryegrass	✓
20%	ORGANIC Timothy	✓
10%	ORGANIC Late Tetraploid Perennial Ryegrass	✓
17%	Late Tetraploid Perennial Ryegrass	
5%	Medium Leaf White Clover	
5%	Small Leaf White Clover	
3%	Large Leaf White Clover	

14kg/ac

— INFORMATION

- Durable, long-term mixture for conservation-focused systems
- Ideal for outlying fields with limited grazing access
- Delivers high-yield, protein-rich cut forage
- Suited to continuous cutting over multiple years
- Contains white clovers to improve forage quality and palatability



Non-Organic Grass Seed Mixtures

Vetch Express

40%	Vetch
30%	Tetraploid Italian Ryegrass
15%	Diploid Italian Ryegrass
10%	Red Clover
5%	Crimson Clover

20kg/ac

— INFORMATION

- One-year, fast-growing mixture for high forage yield
- Primarily designed for a single, large cut
- Regrowth allows for a second cut or aftermath grazing
- High legume content improves soil fertility
- Releases nitrogen back into the soil when ploughed in



Fast Grass



50%	Westerwolds Ryegrass
30%	Tetraploid Italian Ryegrass
20%	Diploid Italian Ryegrass

15kg/ac

— INFORMATION

- Extends the forage production window with strong spring and autumn growth
- Performs well in cooler conditions, producing extra dry matter at low soil temperatures
- Ideal for under-sowing maize mid-summer to protect against soil erosion
- High in sugars and soluble carbohydrates, great for both cutting and grazing



Short Term Red Clover

35%	Tetraploid Hybrid Ryegrass
10%	Intermediate Diploid Perennial Ryegrass
30%	Intermediate Tetraploid Perennial Ryegrass
25%	Red Clover

15kg/ac

— INFORMATION

- Low input mixture, to produce protein rich silage or hay
- Will leave residual nitrogen when ploughed in
- Ideal for lamb fattening



Medium Term Dual Purpose Ley

35%	Hybrid Ryegrass
35%	Intermediate Tetraploid Perennial Ryegrass
30%	ORGANIC Diploid Italian Ryegrass

14kg/ac

— INFORMATION

- Designed for 3–5 years of use
- Ideal for dual-purpose livestock systems
- Suits intensive dairy or silage-focused regimes
- Clover-free for straightforward, cost-effective broadleaf weed control



Medium Term White Clover

25%	Intermediate Diploid Ryegrass
20%	Festulolium
20%	Intermediate Tetraploid Perennial Ryegrass
15%	Hybrid Ryegrass
10%	Late Diploid Perennial Ryegrass
5%	Large Leaf White Clover
5%	Medium Leaf White Clover

14kg/ac

— INFORMATION

- Well-suited to low-input systems
- Primarily designed for grazing, but also yields quality hay or silage
- Offers flexibility across different forage needs
- White clover persists for up to 4 years and adds ~14 kg/acre of residual nitrogen when ploughed in



Long Term Dual Purpose

27%	Intermediate Tetraploid Perennial Ryegrass
25%	Late Tetraploid Ryegrass
22%	Late Diploid Perennial Ryegrass
18%	Intermediate Diploid Perennial Ryegrass
2%	Timothy
6%	Dual White Clover Blend

14kg/ac

— INFORMATION

- Long-term ley (5–7 years minimum) for sustained productivity
- Includes a premium white clover blend with medium and large-leaved varieties
- Versatile mix, ideal across a range of livestock systems
- Produces high-sugar silage and highly digestible aftermath grazing



Long Term Hay

30%	Early Diploid Perennial Ryegrass
30%	Intermediate Diploid Perennial Ryegrass
20%	Late Diploid Perennial Ryegrass
10%	Meadow Fescue
10%	Timothy

14kg/ac

— INFORMATION

- Longer-term mixture ideal for hay and haylage production
- Includes persistent perennial ryegrass for lasting performance
- Diploid varieties aid faster drying after cutting
- Timothy adds bulk and supports high-quality yields



Environmental & Cover Crops

Our environmental range is designed to suit Countryside Stewardship and SFI schemes, offering practical, reliable options for sustainable farming. From improving soil health to boosting biodiversity, these mixtures deliver environmental value without compromising on performance. If you're sowing more than 10 acres, we're always happy to discuss bespoke options. Just get in touch.

Environmental Content

Herbal Leys	49 - 52
Flower Rich Grass Merging	53 - 55
Legume Fallows	56 - 58
Pollen & Nectar Mixture	59 - 60
Winter Bird Food	61 - 62
Grass Margins	63
Catch / Cover Crop	64 - 67



Herbal Leys (C/SAM 3, GS4)

Herbal leys combine a diverse mix of grasses, legumes, and herbs to produce a balanced, mineral-rich forage that benefits grazing livestock.

Many species are deep-rooting, helping access nutrients lower in the soil and, over 3-4 years, significantly improving soil structure and fertility for future crops.

REASONS TO GROW HERBAL LEYS

- Provides natural, balanced forage to support liveweight gain and milk production
- Rich in herbs and trace elements that promote overall livestock health
- More diverse than traditional grass-clover blends, with each species contributing to sward quality
- Higher upfront cost, but long-term gains in animal performance justify the investment



CHICORY

Chicory is highly tolerant of drought, acidic soils, and common pests. It offers a valuable mineral boost to forage, being particularly rich in zinc, potassium, and copper.



YARROW

Yarrow is a hardy perennial with a strong taproot that reaches deep into the soil. It extracts minerals and trace elements, while also playing a role in improving soil condition and structure.



BURNET

Burnet features a deep rooting system that enables it to access minerals and trace elements from lower soil layers. It's both winter hardy and drought tolerant, providing forage growth for much of the year.



SHEEP'S PARSLEY

Sheep's Parsley is a highly palatable, deep-rooting herb that contributes to forage quality and soil health. It draws up valuable minerals while helping to improve soil structure over time.



RIBWORT PLANTAIN

Ribwort Plantain is a deep-rooted herb that thrives in dry conditions and warmer temperatures. Naturally high in protein, it also copes well with frequent grazing, making it a reliable component of resilient swards.

Belt and Braces (C/SAM3, GS4)

15%	Int/Late Diploid Perennial Ryegrass	3%	Ribwort Plantain
20%	Int/Late Tetraploid Perennial Ryegrass	7%	Sheeps Parsley
7%	Meadow Fescue	2%	Yarrow
7%	Timothy	2%	Burnet
4%	Cocksfoot		
7%	Tall Fescue		
10%	Red Clover		
10%	Sainfoin		
3%	Alsike Clover		
3%	Sweet Yellow Clover		

13kg/ac

— ABOUT

You need a dual purpose ley, that goes above and beyond the requirements set out by SFI? This mix not only ticks the boxes, but offers much more in terms of species diversity. Giving you peace of mind that you are giving your animals the best they can get, whilst fixing nitrogen and improving soil structure.



Easy Grazing (C/SAM3, GS4)

30%	Int/Late Diploid PRG	2.5%	Ribwort Plantain
15%	Int/Late Tetraploid PRG	2.5%	Burnet
5%	Timothy	3%	Sheeps Parsley
5%	Meadow Fescue		
15%	Festulolium		
5%	Tall Fescue		
5%	White Clover Blend		
5%	Alsike Clover		
7%	Sainfoin		

13kg/ac

— ABOUT

In need of a mix, that does a bit of everything, won't offend anyone? Cut it, graze it, cattle, sheep, not a problem. The exclusion of Chicory and Red Clover, make this mixture incredibly versatile and forgiving.



Herbal Overseeding Mixture (C/SAM3, GS4)

23%	Red Clover	5%	Sheeps Burnet
22%	White Clover	5%	Sheeps Parsley
20%	Plantain	5%	Timothy
10%	Chicory	4%	Birdsfoot Trefoil
5%	Alsike Clover	1%	Yarrow

4kg/ac



Cutting - No Chicory (C/SAM3, GS4)

20%	Intermediate Diploid Perennial Ryegrass	7%	Sainfoin
20%	Intermediate/Late Tetraploid Perennial Ryegrass	2.5%	Ribwort Plantain
5%	Timothy	2.5%	Burnet
5%	Meadow Fescue	3%	Sheeps Parsley
10%	Festulolium		
10%	Red Clover		
5%	Tall Fescue		
5%	White Clover		
5%	Alsike Clover		

13kg/ac

— ABOUT

Leys to bale and wrap? Look no further, good proportions of ryegrass and red clover to boost dry matter yields. Whilst palatability comes from traditional grass species in the mix. Four species of legume will aid in soil conditioning, improving both soil structure and fixing nitrogen.



70% Organic Belt and Braces (C/SAM3, GS4)

22%	ORGANIC Int/Late Diploid PRG	7%	Sheeps Parsley
20%	ORGANIC Int/Late Tetraploid PRG	2%	Yarrow
7%	ORGANIC Meadow Fescue	2%	Burnet
7%	ORGANIC Timothy		
4%	ORGANIC Cocksfoot		
10%	ORGANIC Red Clover		
10%	Sainfoin		
3%	Alsike Clover		
3%	Sweet Yellow Clover		
3%	Ribwort Plantain		

13kg/ac

— ABOUT

You need a dual purpose ley, that goes above and beyond the requirements set out by SFI? This mix not only ticks the boxes, but offers much more in terms of species diversity. Giving you peace of mind that you are giving your animals the best they can get, whilst fixing nitrogen and improving soil structure.



70% Organic Easy Grazing (C/SAM3, GS4)

30%	ORGANIC Int/Late Diploid PRG	✓	2.5%	Ribwort Plantain	
25%	ORGANIC Int/Late Tetraploid PRG	✓	2.5%	Burnet	
5%	ORGANIC Timothy	✓	3%	Sheeps Parsley	
5%	ORGANIC Meadow Fescue	✓			13kg/ac
5%	Festulolium				
5%	Tall Fescue				
5%	ORGANIC White Clover	✓			
5%	Alsike Clover				
7%	Sainfoin				

— ABOUT

In need of a mix, that does a bit of everything, won't offend anyone? Cut it, graze it, cattle, sheep, not a problem. The exclusion of Chicory and Red Clover, make this mixture incredibly versatile and forgiving.



70% Organic Cutting - No Chicory (C/SAM3, GS4)

20%	ORGANIC Int PRG	✓	7%	Sainfoin	
25%	ORGANIC Int/Late Tet PRG	✓	2.5%	Ribwort Plantain	
5%	ORGANIC Timothy	✓	2.5%	Burnet	
5%	ORGANIC Meadow Fescue	✓	3%	Sheep's Parsley	
5%	Festulolium				13kg/ac
10%	ORGANIC Red Clover	✓			
5%	Tall Fescue				
5%	ORGANIC White Clover	✓			
5%	Alsike Clover				

— ABOUT

Leys to bale and wrap? Look no further, good proportions of ryegrass and red clover to boost dry matter yields. Whilst palatability comes from traditional grass species in the mix. Four species of legume will aid in soil conditioning, improving both soil structure and fixing nitrogen.



Flower Rich Grass Margins Strips & Blocks (C/IPM2, AB8)

Wildflower grass mixtures are an excellent choice for farmers looking to enhance biodiversity, improve soil health, and meet the environmental goals of Countryside Stewardship and the SFI scheme. These mixtures not only support wildlife but also offer long-term benefits to farm productivity and sustainability.

— WHY GROW WILDFLOWER MIXTURES

- **Soil Health**
Wildflowers and grasses help improve soil structure and fertility, reducing the need for synthetic inputs
- **Biodiversity Boost**
Supports a wide range of pollinators, birds, and beneficial insects, improving ecosystem health
- **Long-Term Sustainability**
Provides a diverse, low-maintenance forage resource, supporting farm resilience and reducing the need for frequent reseeding
- **Pollution Control**
Wildflower mixes can help with nitrogen fixation and reduce nutrient runoff, improving water quality



— BIRD'S FOOT TREFOIL

A nitrogen-fixing legume that restores soil fertility, especially in depleted or degraded soils. It improves soil structure and helps prevent erosion, making it ideal for ecological restoration projects.



— OXEYE DAISY

A vital nectar source for pollinators, Oxeye Daisy boosts biodiversity and supports habitat restoration. It attracts beneficial insects, contributing to healthier ecosystems and enhancing native wildflower meadows.



— AGRIMONY

Improves soil structure and health, attracting pollinators while adding diversity to restored habitats. Agrimony is key for increasing the floral variety in meadows and grasslands, supporting sustainable ecosystems.



— CORN COCKLE

Helps enhance biodiversity by attracting pollinators, particularly bees. Its vibrant flowers contribute to floral diversity in restored meadows, creating a more resilient and productive ecosystem.

Flower Rich Margins 10% Wildflowers (C/IPM2, AB8)

— FLOWERING SPECIES		— GRASSES	
1%	Birdfoot Trefoil	45%	Creeping Red Fescue
1%	Red Clover	20%	Chewings Fescue
1%	Vetch	5%	Meadow Fescue
1%	Parsley	5%	Timothy
1%	Phaceila	10%	Hard Fescue
1%	Berseem Clover	5%	Slender Red Fescue
1%	Alsike Clover		
0.5%	Wild Carrot		
0.5%	Agrimony		
0.5%	Yarrow		
0.5%	Oxeye Daisy		
0.5%	Corn Cockle		
0.5%	Meadow Sweet		

8kg/ac

— INFORMATION

- Abundant supply of pollen and nectar-rich flowers throughout the season
- Suitable for arable land, temporary grassland, or bush orchards
- Recommended cutting/topping in August/September, with a possible second cut in March/April



70% Organic Wildflower Margins 10% Wildflowers (C/IPM2, AB8)

— FLOWERING SPECIES		— GRASSES	
1%	Birdfoot Trefoil	45%	ORGANIC Creeping Red Fescue
1%	Red Clover	20%	ORGANIC Chewings Fescue
1%	Vetch	5%	ORGANIC Meadow Fescue
1%	Parsley	5%	Timothy
1%	Phaceila	10%	Hard Fescue
1%	Berseem Clover	5%	Slender Red Fescue
1%	Alsike Clover		
0.5%	Wild Carrot		
0.5%	Agrimony		
0.5%	Yarrow		
0.5%	Oxeye Daisy		
0.5%	Corn Cockle		
0.5%	Meadow Sweet		

8kg/ac

— INFORMATION

- Abundant supply of pollen and nectar-rich flowers throughout the season
- Suitable for arable land, temporary grassland, or bush orchards
- Recommended cutting/topping in August/September, with a possible second cut in March/April



Flower Rich Margins 20% Wildflowers (C/IPM2, AB8)

— FLOWERING SPECIES		— GRASSES	
1%	Lady's Bedstraw	20%	Sheeps Fescue
1%	Yarrow	35%	Chewings Fescue
1%	Self Heal	10%	Crested Dogstail
1%	Red Campion	5%	Common Bent
1%	Phaceila	10%	Slender Red Fescue
1%	Berseem Clover	20%	Wildflowers
1%	Alsike Clover		
0.5%	Wild Carrot		
0.5%	Agrimony		
0.5%	Yarrow		
0.5%	Oxeye Daisy		
0.5%	Corn Cockle		
0.5%	Meadow Sweet		

8kg/ac

— INFORMATION

- Outstanding mixture designed for amenity areas
- Contains a wide range of reliable perennial species
- Includes fine-leaved grasses for a refined look.
- Produces a vibrant, colourful canopy



Legume Fallows (C/NUM3, AB15)

Legume fallow mixtures are specifically designed to enhance soil fertility, reduce erosion, and support biodiversity. As part of the Countryside Stewardship and SFI scheme, these mixtures offer a practical and sustainable way for you to meet environmental objectives while improving the health and productivity of your land.

— WHY GROW A LEGUME FALLOW?

- **Soil Fertility Improvement**
Legumes fix nitrogen, reducing the need for artificial fertilisers and improving soil health
- **Erosion Control**
Deep-rooting legumes help prevent soil erosion and enhance water retention
- **Biodiversity Support**
Provides habitat for beneficial insects and wildlife, contributing to a more diverse ecosystem
- **Low Maintenance**
Requires minimal input once established, offering a cost-effective solution for long-term soil management



— VETCH

Fixes nitrogen in the soil, reducing the need for synthetic fertilisers. Helps prevent soil erosion with its deep-root system.



— LUCERNE

Improves soil structure and water retention with its deep roots. A highly effective nitrogen fixer, enhancing soil fertility over time.



— RED CLOVER

Fixes nitrogen, enriching soil fertility and reducing fertiliser reliance. Improves biodiversity by supporting pollinators and beneficial insects.



— YELLOW TREFOIL

Adds nitrogen to the soil, improving soil health. Supports biodiversity by attracting pollinators and beneficial insects.

Annual Legume Fallow (C/NUM3, AB15)

— INFORMATION

→ An economical, annual mixture!



50%	Vetch
20%	Sainfoin
10%	Berseem Clover
10%	Crimson Clover
5%	Sweet Yellow Blossom Clover
5%	Persian Clover

10kg/ac



Legume Fallow (C/NUM3, AB15)

50%	Intermediate Diploid Ryegrass
20%	Festulolium
13%	Intermediate Tetraploid Perennial Ryegrass
10%	Hybrid Ryegrass
5%	Late Diploid Perennial Ryegrass
2%	Large Leaf White Clover

10kg/ac

— INFORMATION

- Reduces flowering blackgrass by promoting diverse plant growth
- Provides an abundant supply of pollen and nectar-rich flowers from early to late summer.
- Naturally boosts soil fertility and increases nitrogen levels, thanks to the high red clover content



Economy Legume Fallow (C/NUM3, AB15)

— INFORMATION

→ The same benefits as our standard mix, with some amendments to offer a financial saving



50%	Vetch
20%	Crimson Clover
10%	Berseem Clover
10%	Sainfoin
5%	Alsike Clover
5%	Sweet Yellow Blossom Clover

10kg/ac



It is Possible to add grass to these mixtures as required. Please enquire if you're interested in this.



70% Organic Annual Legume Fallow (C/NUM3, AB15)



— INFORMATION

→ An economical, annual mixture!



50%	ORGANIC Vetch	✓
20%	ORGANIC Sainfoin	✓
10%	Berseem Clover	
10%	Crimson Clover	
5%	Sweet Yellow Blossom Clover	
5%	Persian Clover	

10kg/ac

70% Organic Legume Fallow (C/NUM3, AB15)

50%	ORGANIC Vetch	✓
20%	ORGANIC Red Clover	✓
13%	Sweet Yellow Blossom Clover	
10%	Lucerne	
5%	Alsike Clover	
2%	Yellow Trefoil	

10kg/ac

— INFORMATION

- Reduces flowering blackgrass by promoting diverse plant growth
- Provides an abundant supply of pollen and nectar-rich flowers from early to late summer
- Naturally boosts soil fertility and increases nitrogen levels, thanks to the high red clover content



Pollen & Nectar Mixtures (AHL1, AB1)

Pollen and nectar mixes are designed to support pollinators and other beneficial insects, providing a rich food source throughout the growing season. By growing these mixtures on your farm, you'll help enhance biodiversity, improve soil fertility.

— REASONS TO GROW HERBAL LEYS

- Highly effective in producing an abundance of flora between early and late summer to encourage insect and small mammal activity
- Best sown from late March to early April onwards, when soil temps are 9 degrees or more
- Regular topping is required in the first year to control weed growth

These mixes not only benefit wildlife but also contribute to the long-term sustainability of your land, making them a smart choice for both ecological and agricultural health.



Pollen & Nectar Gold (AHL1, AB1)



33%	Sainfoin	6.5%	Crimson Clover
25%	Vetch	4%	Birdsfoot Trefoil
10%	Red Clover	4%	Yellow Trefoil
8%	Alsike Clover	1%	Black Knapweed
8%	Lucerne	0.5%	Yarrow

6kg/ac

Pollen & Nectar (AHL1, AB1)



40%	Vetch	2%	Birdsfoot Trefoil
10%	Red Clover	5%	Sweet Yellow Blossom Clover
5%	Lucerne	5%	Alsike Clover
8%	Crimson Clover	1%	Oxeye Daisy
10%	Berseem Clover	0.5%	Yarrow
10%	Sainfoin	1%	Wild Carrot
2%	Yellow Trefoil	0.5%	Knapweed

6kg/ac

70% Organic Pollen & Nectar (AHL1, AB1)



40%	ORGANIC Vetch	2%	Birdsfoot Trefoil
10%	ORGANIC Red Clover	5%	Sweet Yellow Blossom Clover
10%	ORGANIC Sainfoin	5%	Alsike Clover
10%	ORGANIC Crimson Clover	1%	Oxeye Daisy
8%	Berseem Clover	0.5%	Yarrow
5%	Lucerne	1%	Wild Carrot
2%	Yellow Trefoil	0.5%	Knapweed

6kg/ac

Winter Bird Food (C/AHL2, AB9)

Growing winter bird food covers on your farm provides a reliable food source for birds during the colder months, helping support local wildlife through the winter. These mixtures are not only beneficial for birds but can contribute to improved soil health and biodiversity. Some included species:



MILLETS

- Provides an excellent food source for a wide variety of bird species during winter.
- Grows quickly and produces a high yield of seeds that birds love.
- Tolerant of poor soils and drought conditions, making it easy to grow.



SORGHUM

- A hardy crop that produces abundant seeds, perfect for attracting a variety of birds.
- Drought-tolerant and grows well in poor, dry soils, making it ideal for tough conditions.
- Helps with weed suppression, benefiting overall farm management.



SUNFLOWERS

- Produce large, nutrient-rich seeds that are highly attractive to birds.
- Sunflowers grow well in many soil types, and their tall, strong stems provide shelter for birds.
- Support pollinators like bees, contributing to overall farm biodiversity.



QUINOA

- Provides nutritious seeds for birds, with high protein content.
- Grows well in a range of soil types and conditions, adding resilience to your farm's ecosystem.
- Supports biodiversity by offering food for a variety of bird species.

Economy Wild Bird Food (C/AHL2, AB9)



65%	Triticale	10%	Linseed
10%	Spring Barley	3%	Red Millet
10%	Spring Wheat	2%	White Millet

20kg/ac

Non Brassica Wild Bird Food (C/AHL2, AB9)



25%	Spring Triticale	5%	Sunflower
24%	Spring Barley	3%	Japanese Reed Millet
24%	Spring Wheat	2.5%	Red Millet
7%	Dwarf Sorghum	2.5%	Gold of Pleasure
6%	White Millet	1%	Quinoa

20kg/ac

Wild Bird Food with Sunflowers (C/AHL2, AB9)



70%	Spring Triticale	8%	Oil Radish
10%	Sunflower	2%	Kale x Rape
5%	Quinoa	5%	Red & White Millet blend

20kg/ac

70% Organic Wild Bird Food (C/AHL2, AB9)



35%	ORGANIC Wheat	5%	Sunflowers
35%	ORGANIC Barley	2%	Phacelia
5%	Linseed	3%	Quinoa
1%	Chicory	5%	White Mustard
9%	Millet blend		

20kg/ac

Grass Margins

Buffers, Corners and Blocks (C/AHL3/4, IGL3, AB3)

Grassy Margin Mixture (C/AHL3/4, IGL3, AB3)

25%	Creeping Red Fescue
20%	Timothy
20%	Meadow Fescue
5%	Common Bent
10%	Smooth Stalked Meadow Grass
10%	Chewings Fescue
10%	Cocksfoot

10kg/ac

INFORMATION

- It will provide protection for existing and creation of new habitats. It will also form habitat
- networks for small mammals, invertebrates and birds by creating links or corridors between sites
- If next to a watercourse it will also prevent pollutants such as fertilisers from being transported in surface water runoff



Back to Arable Mixture (C/AHL3/4, IGL3, AB3)

20%	Meadow Fescue
10%	Smooth Stalked Meadow Grass
15%	Sheeps Fescue
20%	Timothy
5%	Common Bent Grass
25%	Red Fescue
5%	Crested Dogstail

10kg/ac

INFORMATION

- Containing a variety of low maintenance traditional grasses which are easy to establish and maintain on most soil types
- This mix will require minimum management whilst retaining suitable green cover in keeping with the local landscape and also help to stabilise the soil



70% Organic Grassy Margin Mixture (C/AHL3/4, IGL3, AB3)

40%	ORGANIC Meadow Fescue	✓
20%	ORGANIC Timothy	✓
10%	ORGANIC Cocksfoot	✓
10%	Creeping Red Fescue	
5%	Common Bent	
5%	Smooth Stalked Meadow Grass	
5%	Chewings Fescue	

10kg/ac

INFORMATION

- It will provide protection for existing and creation of new habitats. It will also form habitat
- Networks for small mammals, invertebrates and birds by creating links or corridors between sites
- If next to a watercourse it will also prevent pollutants such as fertilisers from being transported in surface water runoff



Catch Crops

Catch crops are a cost effective ground cover, whilst also producing grazable forage for livestock through the autumn and winter months, offering farmers an economical alternative to indoor feeding practices.

Fast Grass

50%	Westerwolds Ryegrass
25%	Diploid Italian Ryegrass
25%	Tetraploid Italian Ryegrass

12.5kg/ac

— ABOUT

Fast Grass will be quick to establish and therefore is ideal for late sowing. It may provide a late Autumn cut if sown early enough or can be cut or grazed in the spring



Supreme Catch Crop (C/SAM2)

35%	Forage Rape
65%	Stubble Turnip

2-3kg/ac

— ABOUT

Sown from May to Late August, the resulting forage can be utilized between 10 and 12 weeks of sowing. It is best suited to sheep enterprises for either finishing labs or as late Autumn or early/mid winter sheep keep.



Supreme Mid-Winter Keep (C/SAM2)

15%	Forage Brassica
15%	Maincrop Turnip
45%	Stubble Turnip
25%	Kale

2kg/ac

— ABOUT

Sowing Early July to Early August, this mixture is principally designed as a winter-based sheep keep for utilization from late Autumn through to late January.



Supreme Late-Winter Keep (C/SAM2)

15%	Forage Brassica
15%	Maincrop Turnip
45%	Stubble Turnip
25%	Kale

2kg/ac

— ABOUT

Ideally sown from June to Early August, the optimum utilization time of this mixture is December through to March. It is a durable brassica mixture highly suited to mid/late winter sheep keep. Although primarily designed for sheep keep, outwintered cattle can perform extremely well on it.



Cover Crops

Choosing the Right Cover Crop



— ABOUT

Different cover crops offer different benefits, so it's important to match the mixture to your goals and the needs of the following crop:

— INFORMATION

- Fast-growing species suit short-term covers where quick ground cover is needed
- Hardier, slower-growing crops are better for autumn sowing and overwinter covers
- Nitrogen-lifting crops are ideal for nitrogen-rich soils, holding existing nutrients for future use
- Nitrogen-fixing legumes suit lower-fertility soils, adding new nitrogen to boost soil fertility

Species	Fixer/Holder	Duration	N Release	Spring/Autumn
Red Clover	Fixer	1-3 Years	Quick	Spring/Autumn*
White Clover	Fixer	2-5 Years	Quick	Spring/Autumn*
Yellow Trefoil	Fixer	6-18 months	Quick	Spring
Crimson Clover	Fixer	6-9 months	Quick	Spring
Sweet Clover	Fixer	6-18 months	Quick	Spring
Vetch	Fixer	6-10 months	Quick	Spring/Autumn
Lucerne	Fixer	2-4 Years	Quick	Spring/Autumn*
Forage Rye	Holder	6 months	Slow	Autumn
Mustard	Holder	2-4 months	Slow	Spring/Autumn*
Buckwheat	Holder	4-6 months	Moderate	Spring/Summer
Phacelia	Holder	4-6 months	Slow	Spring/Summer
Italian Ryegrass	Holder	6-12 months	Slow	Spring/Autumn
Sainfoin	Fixer	2-4 years	Fast	Spring/Autumn

*Should be sown by Early Autumn

Over Winter Cover (C/SAM2)

40%	Forage Rye
30%	Vetch
10%	Mustard
10%	Crimson Clover
10%	Oil Radish

20kg/ac

— INFORMATION

- Legumes boost soil fertility, fixing nitrogen
- Oil radish and rye will benefit drainage and compaction
- Quick to establish to aid in weed suppression



70% Organic Cereal & Legume Mix (C/SAM2)

70%	ORGANIC Forage Rye	✓
10%	Vetch	
20%	Mustard	

20kg/ac

— INFORMATION

- Excellent ground cover and biomass production to suppress weeds and protect soil over winter
- Improves soil structure with deep rooting and organic matter
- Captures leftover nutrients post-harvest while fixing nitrogen



Rapid Establishment Mix (C/SAM2, SOH2/3)

70%	Forage Rye
10%	Fodder Radish
10%	Berseem Clover
10%	Crimson Clover

6kg/ac

— INFORMATION

- Rapid establishment to provide quick ground cover.
- Improves soil structure and fertility by enhancing root diversity.
- Captures and holds nutrients during the summer months.



70% Organic Rapid Establishment Mix (C/SAM2, SOH2/3)

70%	ORGANIC White Mustard	✓
10%	Fodder Radish	
10%	Berseem Clover	
10%	Crimson Clover	

6kg/ac

— INFORMATION

- Rapid establishment to provide quick ground cover
- Improves soil structure and fertility by enhancing root diversity
- Captures and holds nutrients during the summer months



Multi Species Summer (C/SAM2, SOH2/3)

50%	Vetch
30%	Linseed
10%	Phacelia
10%	Buckwheat

13kg/ac

— INFORMATION

- Encourages biodiversity by attracting pollinators and beneficial insects
- Boosts soil fertility through nitrogen fixation and nutrient cycling, helping to reduce input costs.
- Improves soil structure with a mix of rooting depths and types



Cereal & Legume Mix (C/SAM2)

80%	Forage Rye
20%	Vetch

20kg/ac

— INFORMATION

- Excellent ground cover and biomass production to suppress weeds and protect soil over winter
- Improves soil structure with deep rooting and organic matter
- Captures leftover nutrients post-harvest while fixing nitrogen



Cope Buy Back Cover Crops

The following mixtures have been selected by George (Grass & Small Seed Specialist) and Dominic (Research Agronomist) as precropping options to boost the performance of crops being grown on our buy back contracts.

Nelson Winter Wheat Cover Crop (C/SAM2, SOH2/3)



— ABOUT

Sowing a cover crop at harvest ahead of winter wheat requires species that are fast to germinate and grow with little requirements to survive cold weather.



70%	White Mustard
10%	Fodder Radish
10%	Berseem Clover
10%	Crimson Clover

5kg/ac

— INFORMATION

- Varied root depth bolsters soil structure
- Brassicas will aid in securing nutrients
- Legumes are capable of nitrogen fixation

Merlin Spring Oat Cover Crop (C/SAM2, SOH2/3)

30%	Vetch
15%	Buckwheat
15%	Crimson Clover
12%	Fodder Radish
10%	Daikon Radish
10%	Egyptian Clover
5%	White Mustard
3%	Phacelia

6kg/ac

— ABOUT

Sowing a winter cover crop ahead of spring cereal, can benefit you in a number of ways, from weed suppression, prevention of nutrients leaching and conditioning the soil.



— INFORMATION

- Large diversity will produce large volumes of biomass
- A wide variety of root depths and types
- All root types will help hold onto and residual nutrients

Linseed Cover Crop (C/SAM2, SOH2/3)



— ABOUT

Sowing a spring cover crop requires a fast establishing mixture that will offer plenty of biomass for weed suppression that is easy to incorporate before drilling.



35%	Black Oats
25%	Vetch
15%	Buckwheat
10%	Berseem Clover
10%	Westerwold Ryegrass
3%	Phacelia

10kg/ac

— INFORMATION

- Variety of rooting depths and types
- Flowering species will benefit pollinators
- Easy to incorporate

Spring Pea Cover Crop (C/SAM2)



— ABOUT

Sowing a winter cover crop before spring peas can be hugely beneficial with the areas to focus on being covering the ground for weed suppression and fixing nitrates.



80%	Black Oats
10%	Vetch
10%	Buckwheat

20kg/ac

— INFORMATION

- Deep roots from the rye will benefit soil structure
- Mustard will aid in weed suppression
- This mix will present nutrient leaching

Soil Capital

Regenerate Your Soil, Build Carbon, Earn Money

At Cope we have a steadfast commitment to long-term partnerships with breeders, growers and producers, cultivating resilient and sustainable markets and variety prospects, as well as dedicating resources to research and development. We believe in regenerative farming practices and aim to support our growers to transition to sustainable farming methods wherever possible. We have partnered with Soil Capital to create Cultivate Carbon by Cope to reward farmers for making these

changes & using carbon insetting to monetise good practice.

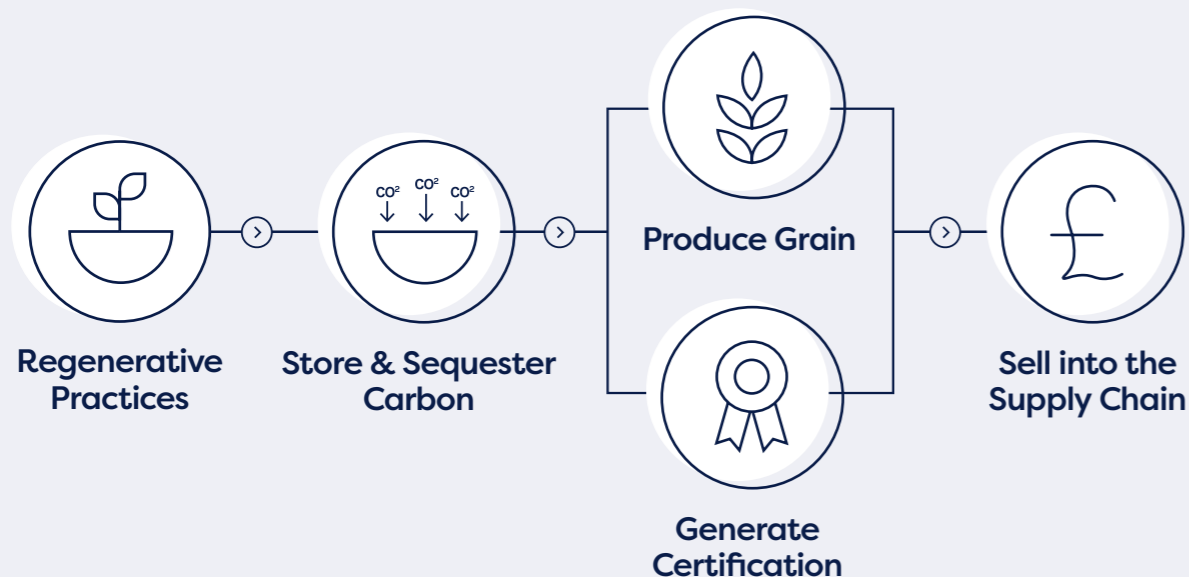
Are you transitioning to regenerative farming practices? If you are incorporating the following practices, we can help you to monetise this through Carbon Cultivate by Cope.

Insetting involves generating and selling carbon certificates to the companies who also buy your grain, so you can top up your income whilst also helping to move the supply chain towards lower carbon emissions, and eventually net zero.

— HOW TO BOOST CARBON

- Replacing synthetic inputs with organic /biological inputs
- Minimising soil disturbance
- Maximising soil cover with plants
- Diversifying the rotation
- Diverse herbal leys
- Integration of livestock
- Agroforestry

Sow & Sequester for Legacy



ADOPT

The ADOPT Funding Opportunity



Accelerating Development of Practices and Technologies Fund launched in April 2025, ADOPT will support collaborative farmer-led, on-farm trials or experiments to generate, test and demonstrate innovative solutions to farming challenges.



Project outputs will provide knowledge of new approaches which will be shared to the wider sector to provide confidence for others to adopt.

At Cope we believe in farmer led research as one of the best mechanisms to foster innovation and improved farm practice. We're delighted to see the Government investing so much in this area and are keen to support you in undertaking your own funded on-farm research.

Our research agronomist, Dominic, has specialised in the area of on-farm research for over a decade and as a registered facilitator for the programme is available to support your

applications and to provide research support.

Round 1 of the full ADOPT grant competition is now open and will close on 25th June, with Round 2 opening the next day. If you have an idea for a research project or would like to discuss the potential of working with us on ADOPT grants please contact Dominic.



Dominic Amos
Research Agronomist & Natural Capital Specialist
dominic@copeseeds.co.uk

Organic Market Review

Putting together this year's market write-up feels as challenging as always; with fewer geopolitical events compared to recent years that pushed prices higher, wheat values have steadily eased since harvest 2024, dragging other markets down with them.

Conventional quality has been relatively good, with plenty of full-spec milling wheat traded. Some German wheat was bought early by millers expecting poorer domestic quality, due to the wet autumn planting campaign in 2023. Oat millers did the same, but last year's wet spring ultimately delivered strong yields and quality in most cases.

Organic Wheat

We continue to see consistent demand for organic grain. Harvest threw a few curveballs and resulted in a mixed bag of quality, leaving organic milling wheat in short supply, which in turn led millers to import to make up the shortfall. Given the larger volumes of feed-quality wheat available, we have filled every contract at prices that felt fair to everyone.

Organic Oats

We have seen continued increasing demand for organic oats, with an increase of over 20% in tonnes traded between harvest '23 and '24. This has come from successfully opening new end homes across the UK and Ireland along with increased demand from the mills themselves.

Organic Beans/Peas

Beans this year have been nobody's friend—hard to home, as compounders have made a switch to peas, and demand for beans has been much lower, contrary to our predictions in recent years.

Peas have been easy to sell into both human consumption and feed markets. HC is a very small market, with the majority going to feed homes.



Looking Ahead

Autumn drilling this year was, let's face it, simple. Growers increased their autumn area, meaning spring cropping area has dropped dramatically. With the rain coming just in time, we could be surprised by harvest yields.

We have secured a further 24,000T requirement for Nelson Winter Wheat and see a need for an additional 3,000 ha on our Buy Back contract. For me, this is a great contract as it ensures a home for conventional milling wheat. A fantastic variety with a great disease profile, well-suited to those looking to exploit a low-input system. The conventional milling oat market is consistent. With demand for oats

increasing. We have a unique flexi-oat contract that offers protection for you, during times of uncertainty.

Our naked oat contract is very strong. We will be looking for new growers for harvest '26 and currently have an autumn variety on its way allowing us to offer our contract to growers interested in both winter and spring drilling.

Conventional Added Value Grain Contracts

In our office we see buy backs as being one of the most important tools a grower can use to allow for planning of the rotation and secure preferred movement options to suit storage and cashflow requirements. We have a range of added value grain buy backs for consideration. We're also open to working with growers who wish to bi-crop and can help organise separation of crops if needed.

Flexi- Oat Contract

Our one-of-a-kind oat contract gives YOU the tool to manage your exposure to the oat market, making this break crop PROFITABLE. With a multitude of options on how we market your oats, the power is in your hands. This contract was designed to help you as a grower manage your costs effectively and give you a variety of options on how to do so.

Marrowfats

Our marrowfat contract offers a competitive fixed price up to 10% bleaching, at which point we have a clear claim structure to ensure you know exactly what price you are getting for your crop. This pea contract is very well suited to budgeting for cash flow and offering a safe option for a break crop that pays a premium.

Large Blue Peas

Our Human consumption pea contract offers a dual option contract price. We work closely with our growers to advise on how to get the most out of your pea crop and be able to make the most out of the contract. We have a great partnership with end users and offer very competitive prices.

Linseed

Linseed remains a valuable commodity. Our main homes require thousands of tonnes a year which are currently supplied through domestic and imported. This presents a massive opportunity as they look to move their supply from imported to domestic supply. We require linseed for various markets, which allows us to place your crop in the best suit home, but we focus our buy back contracts on pet feed and a premium human consumption market allowing us to pay a premium over current Linseed markets.

Naked Oats

The Naked oat contract offers a premium over Wheat futures depending on movement period. Naked oats are seeing a growing demand, and we are proud to be able to offer a Buy-back contract that provides safety in growing a niche crop with a guaranteed end market, and with such a wide drilling window, naked oats are a great option even in a tricky season.

Nelson Winter Milling Wheat

Our Nelson Buy-Back contract offers growers the chance to get a premium over group 1 milling prices on a closed contract with Heygates millers. Nelson is blessed with the ability to work in reduced nitrogen situations and still produce high proteins, along with its high disease resistance, the cost saving and benefits of growing Nelson on your farm start from drilling!

If you are interested in any of our conventional buy back contracts, please get in touch with either Harry or Tom on 01529 421081.



Cope

+44 (0) 1529 421081
info@copeseeds.co.uk

The Seed House, Pride Parkway, Sleaford
Lincolnshire, England, NG34 8GL

copeseeds.co.uk

